

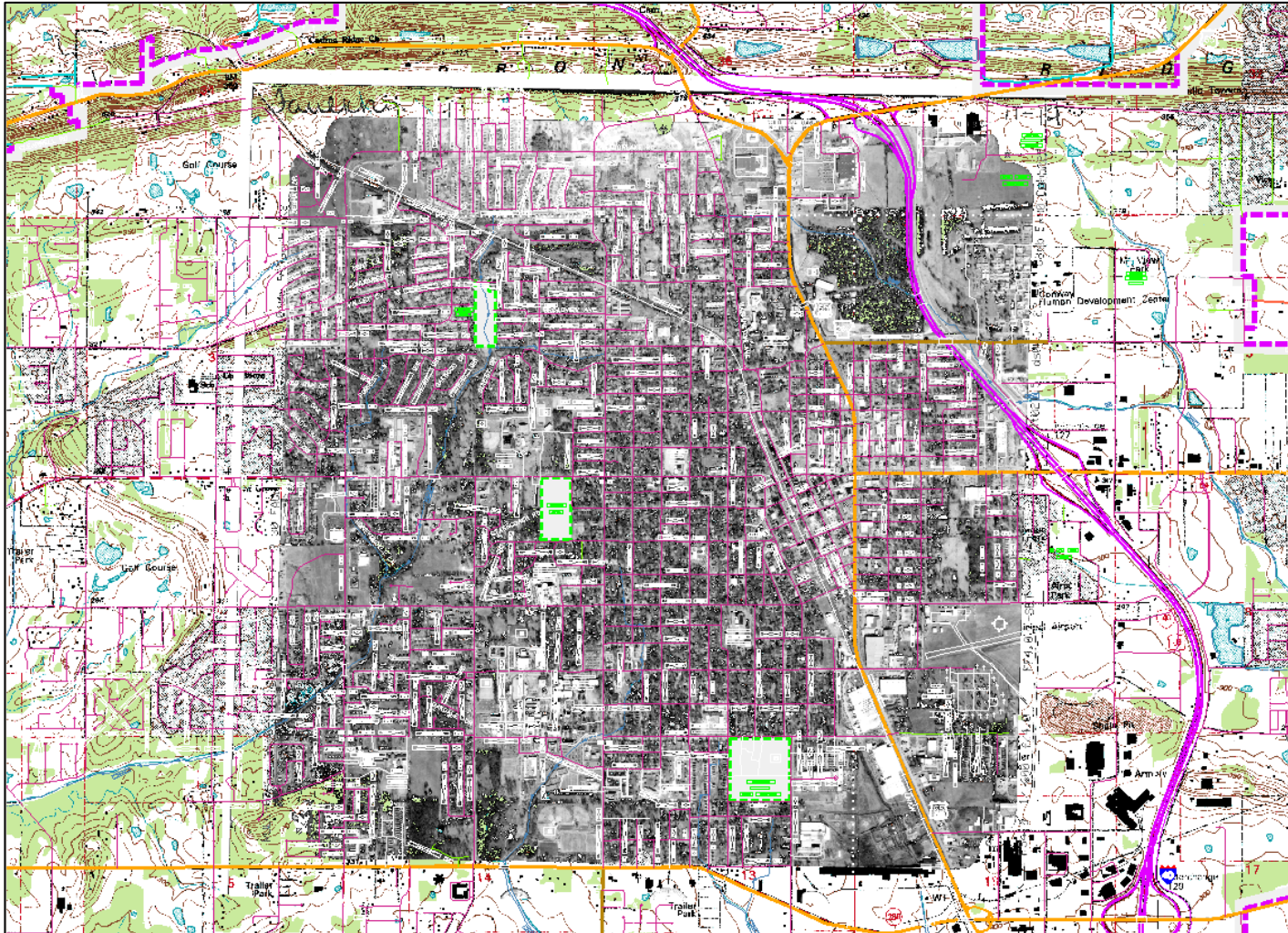


Cartographic and GIS Resources for Pavement Management in Arkansas

Arkansas State Highway and
Transportation Department
Planning and Research Division

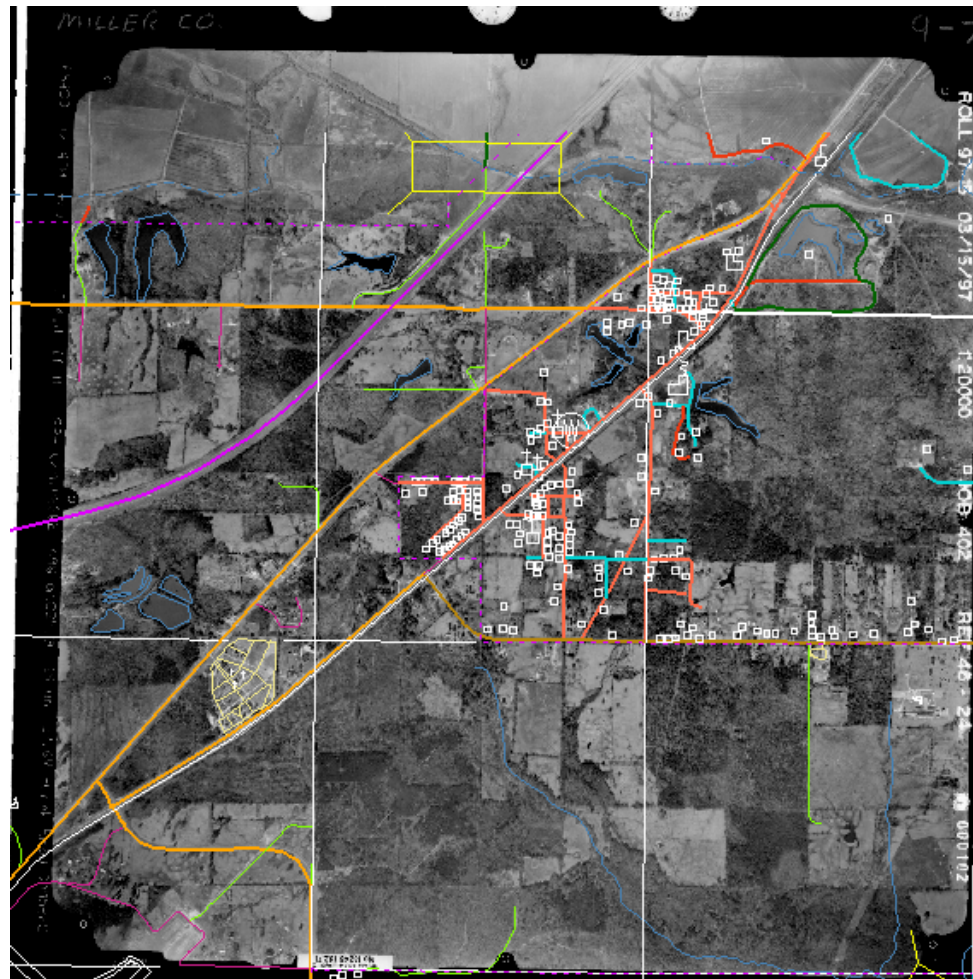


Cartographic Procedures



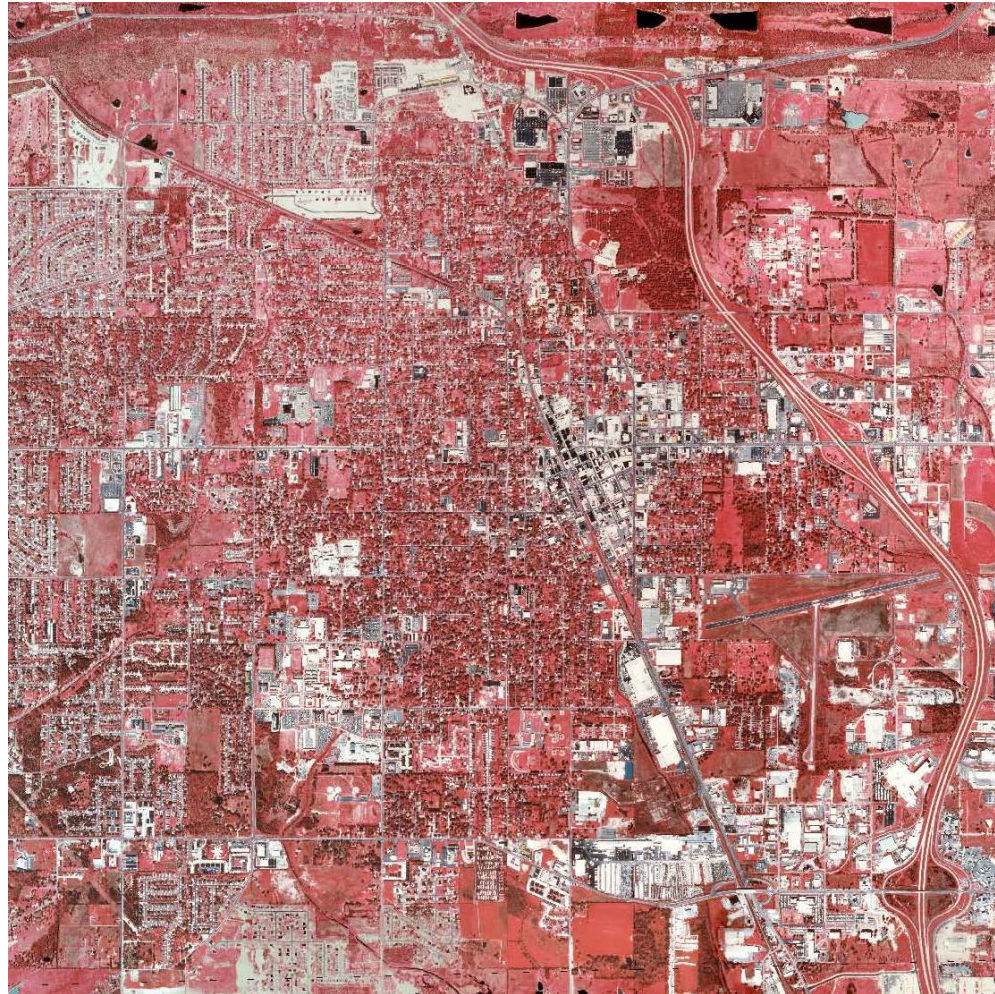


Cartographic Procedures



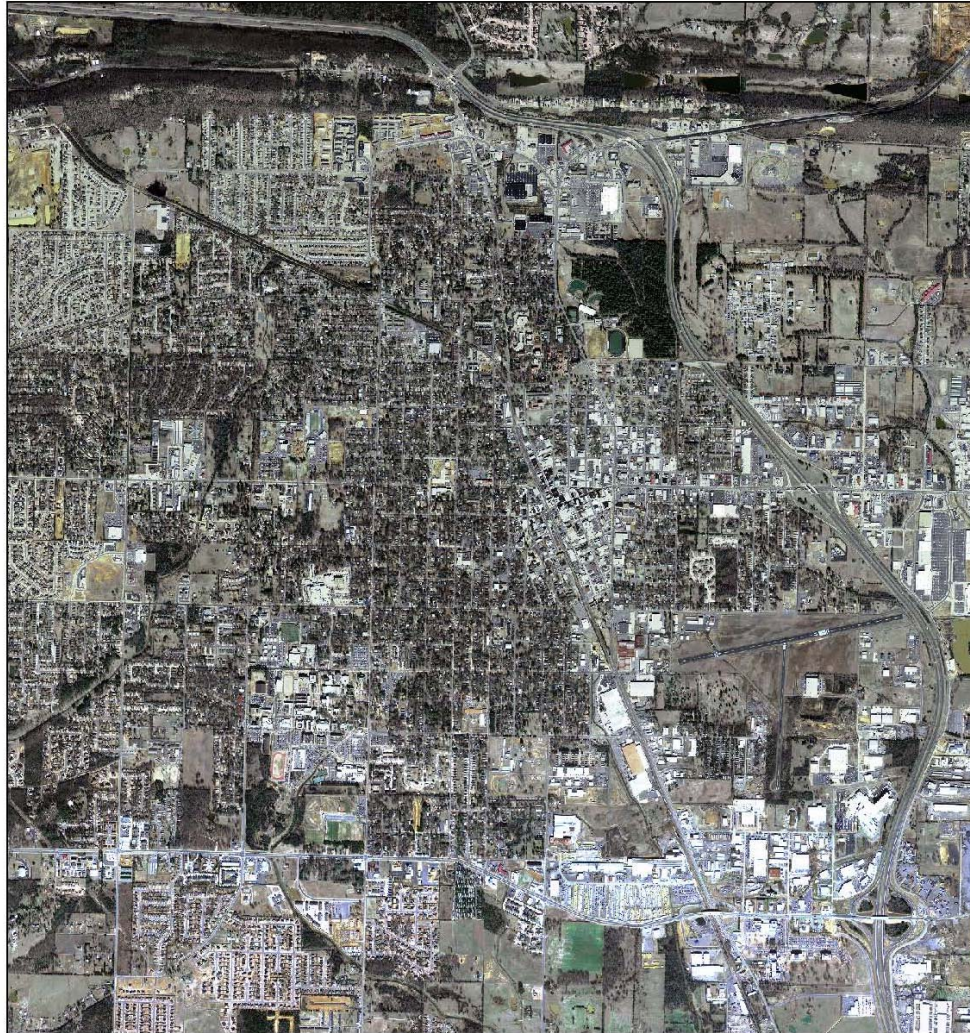


Cartographic Procedures



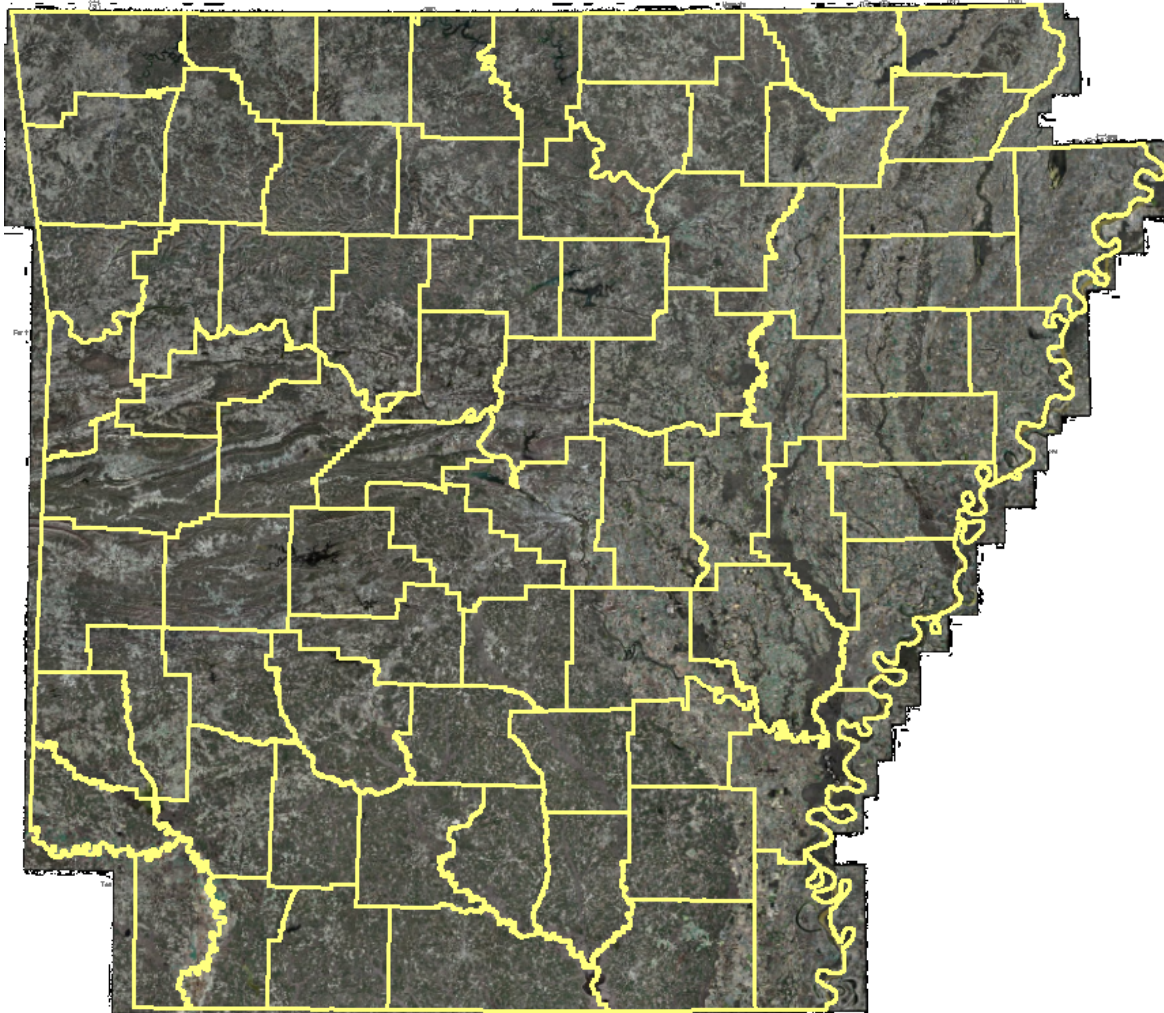


Cartographic Procedures



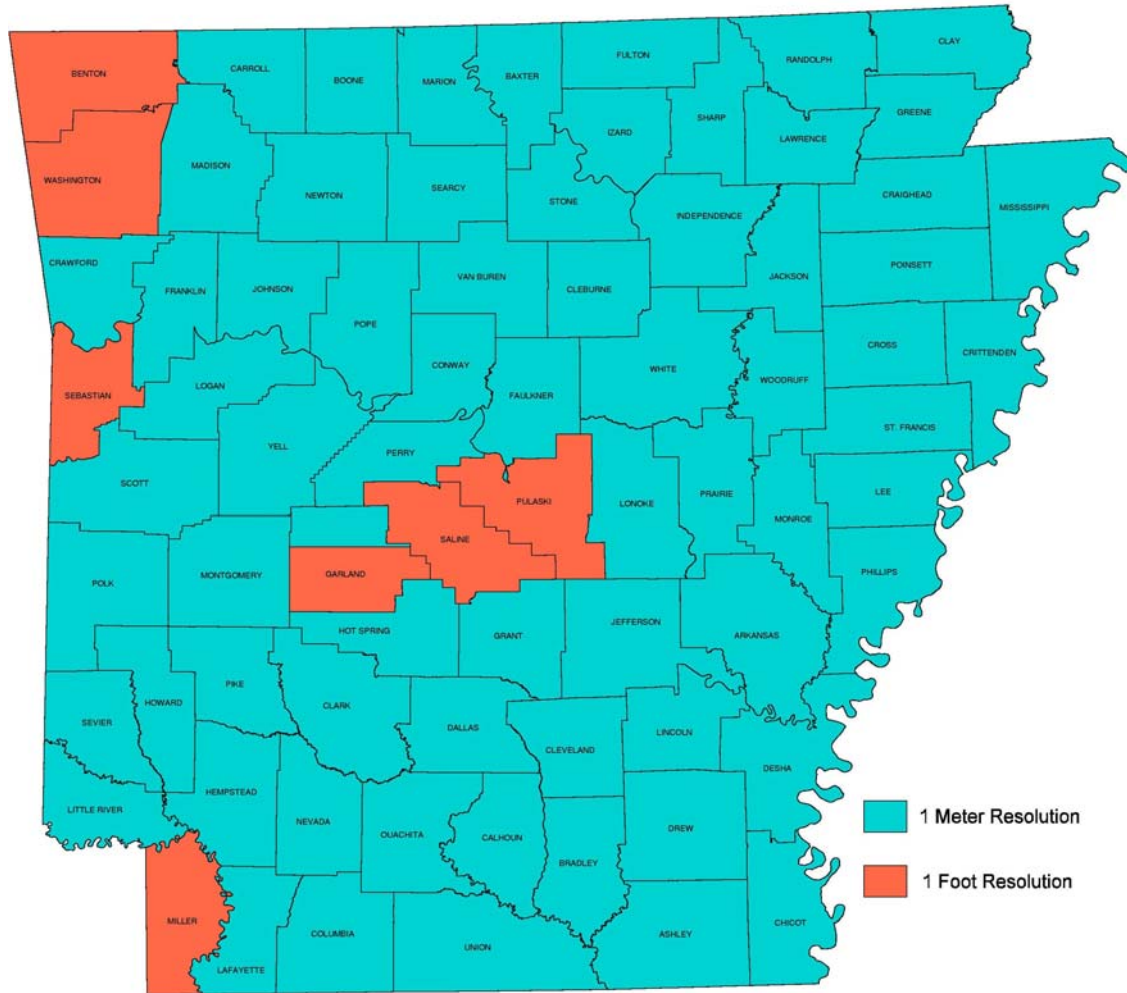


Aerial Photography





Aerial Photography





Aerial Photography



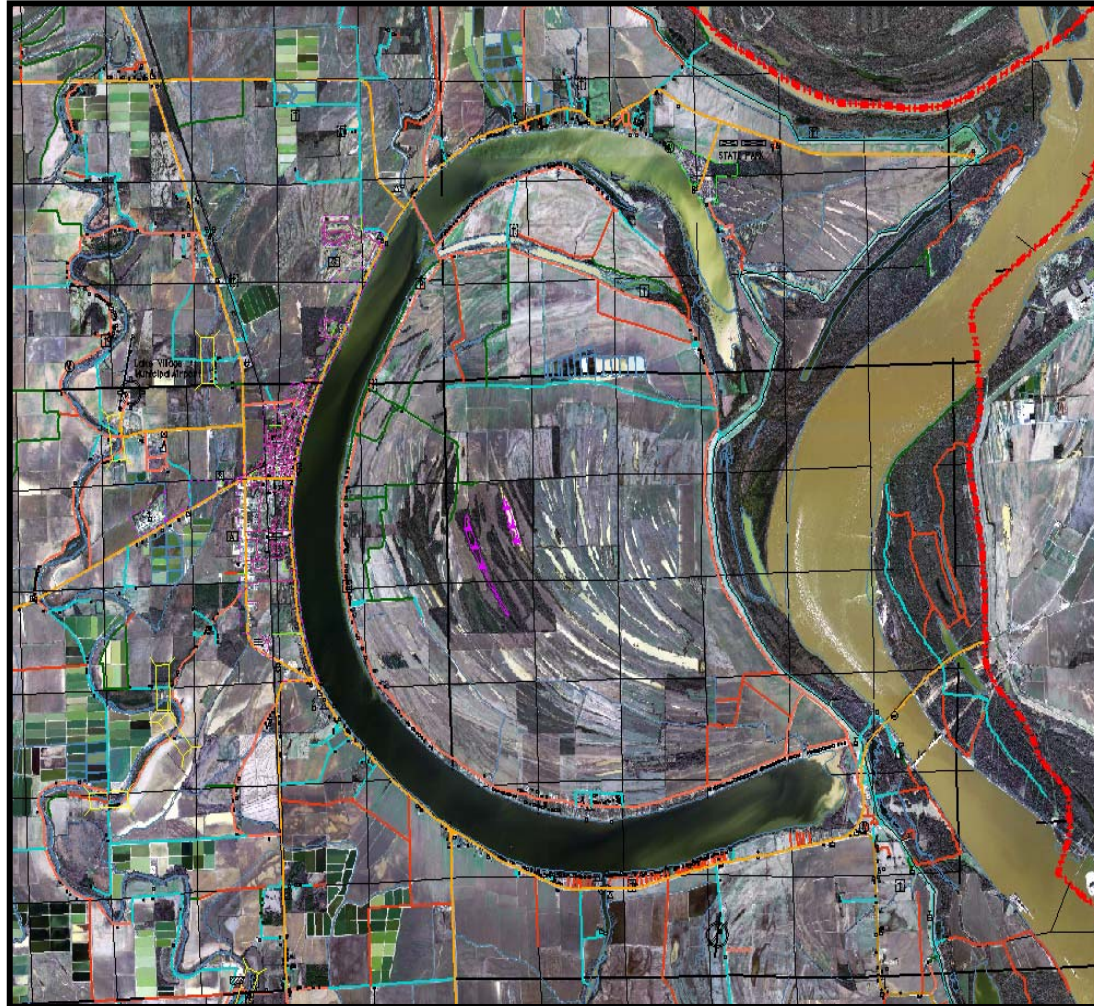
1 Foot Resolution



1 Meter Resolution

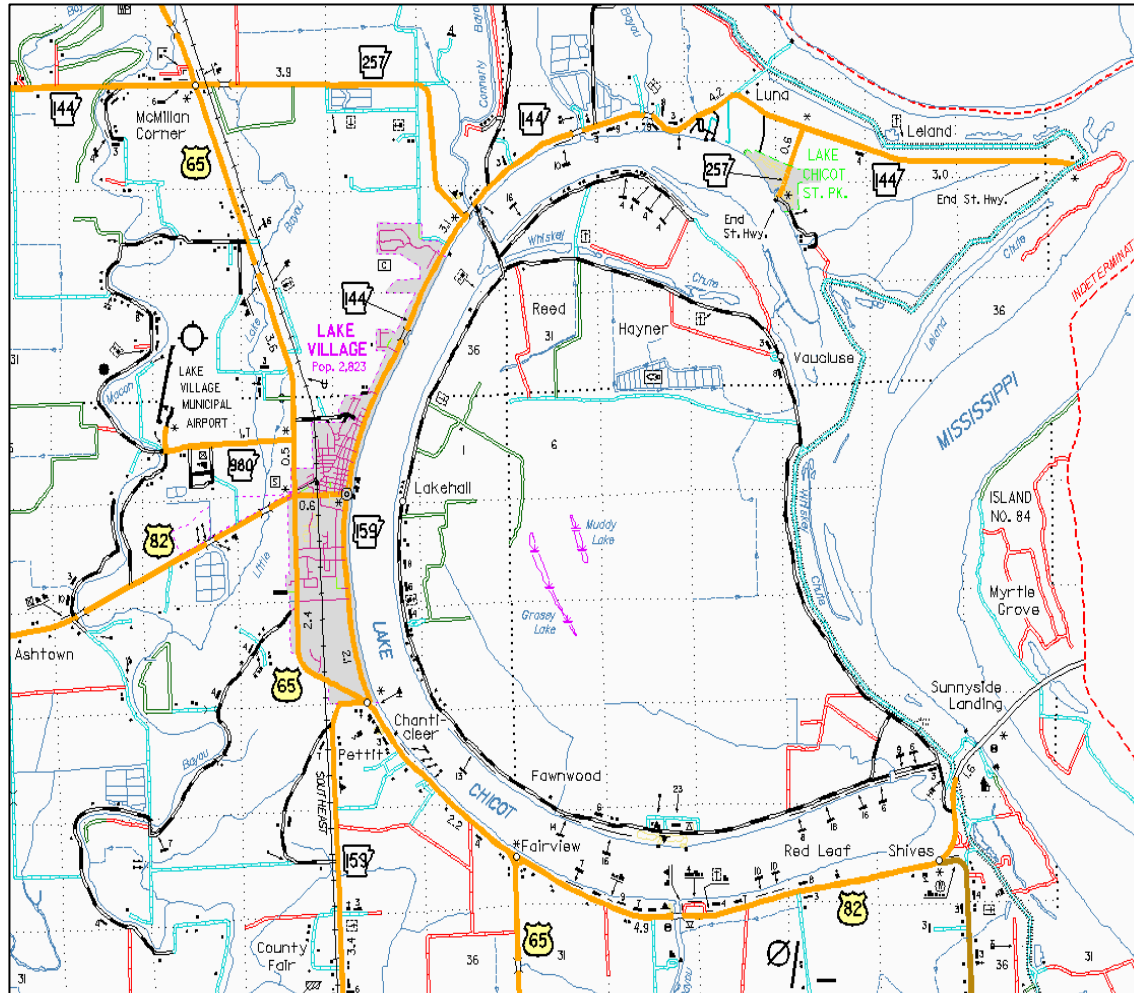


Cartographic Procedures



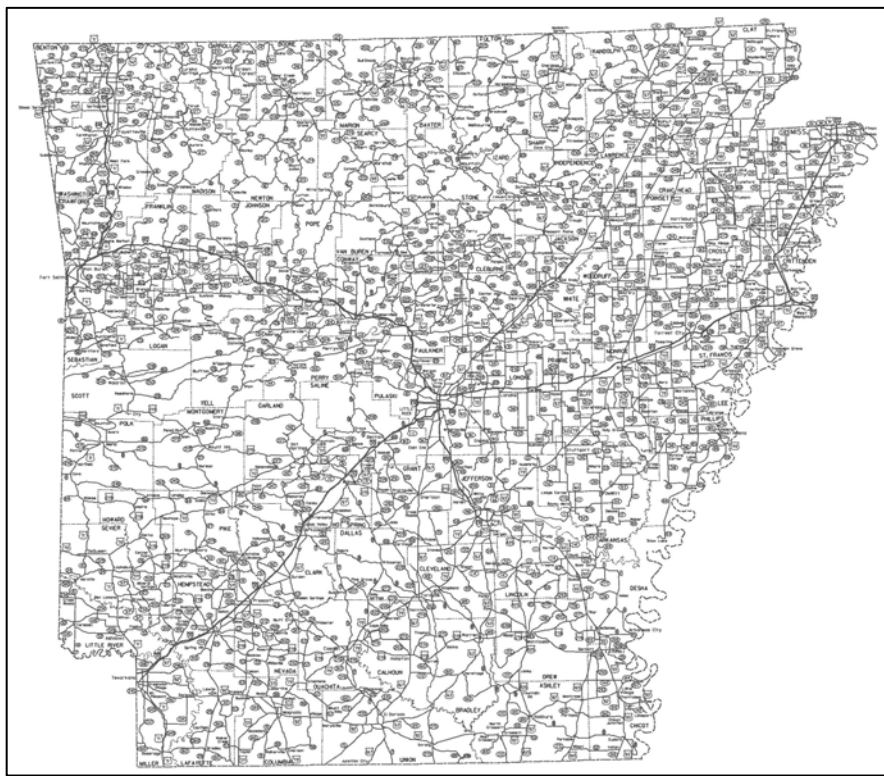


Cartographic Procedures



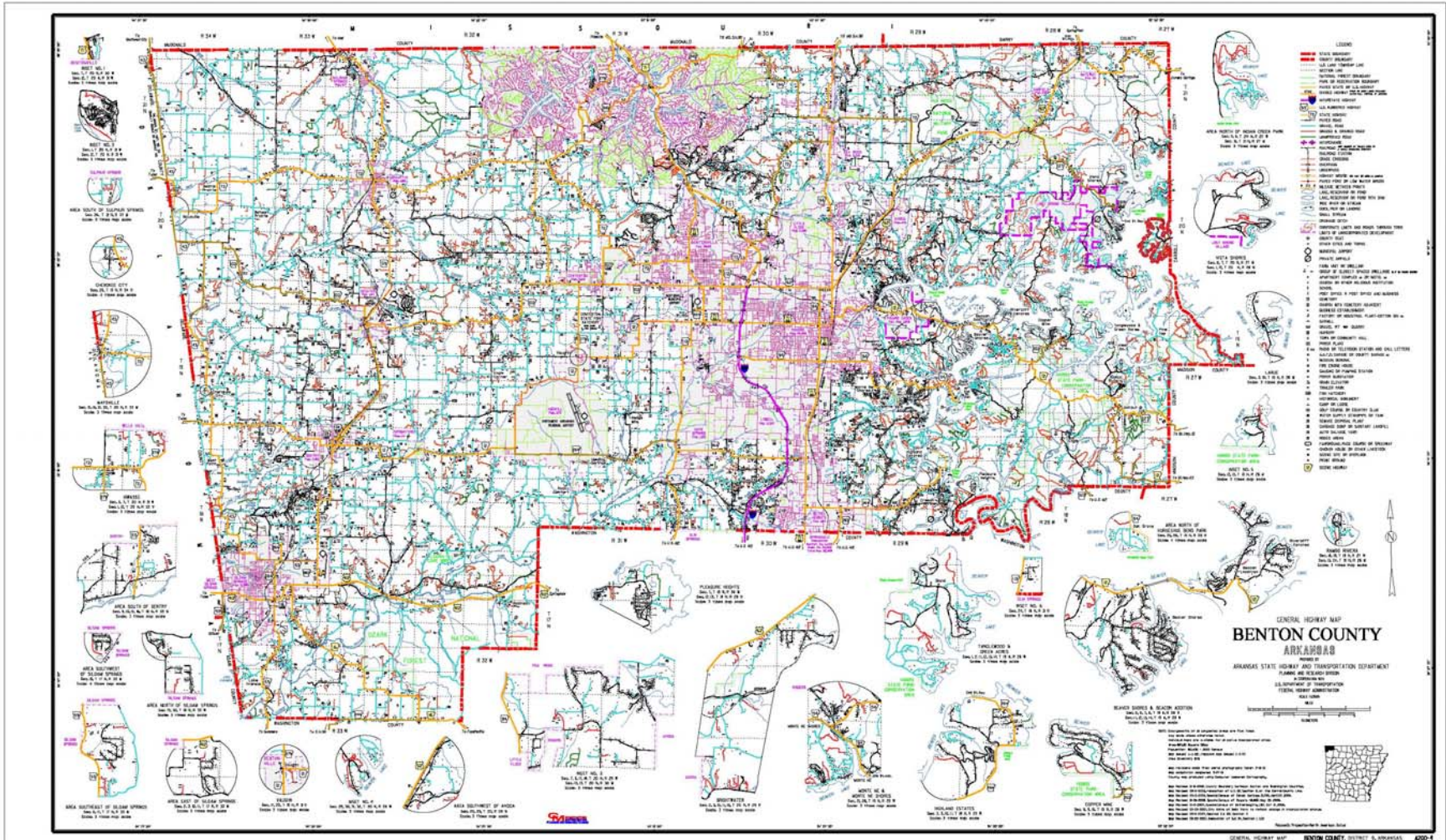


Statewide Base Maps



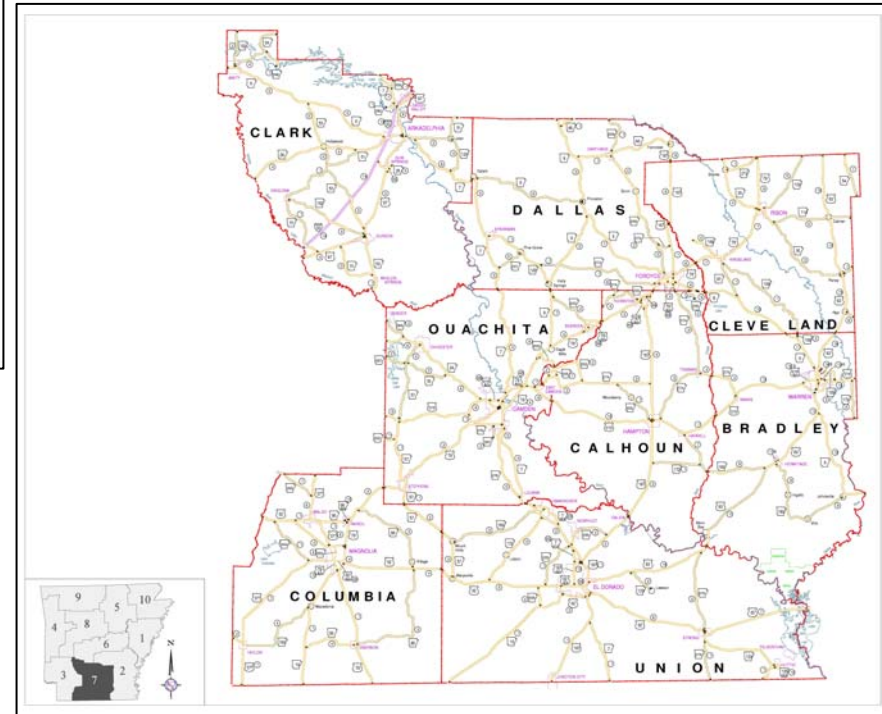
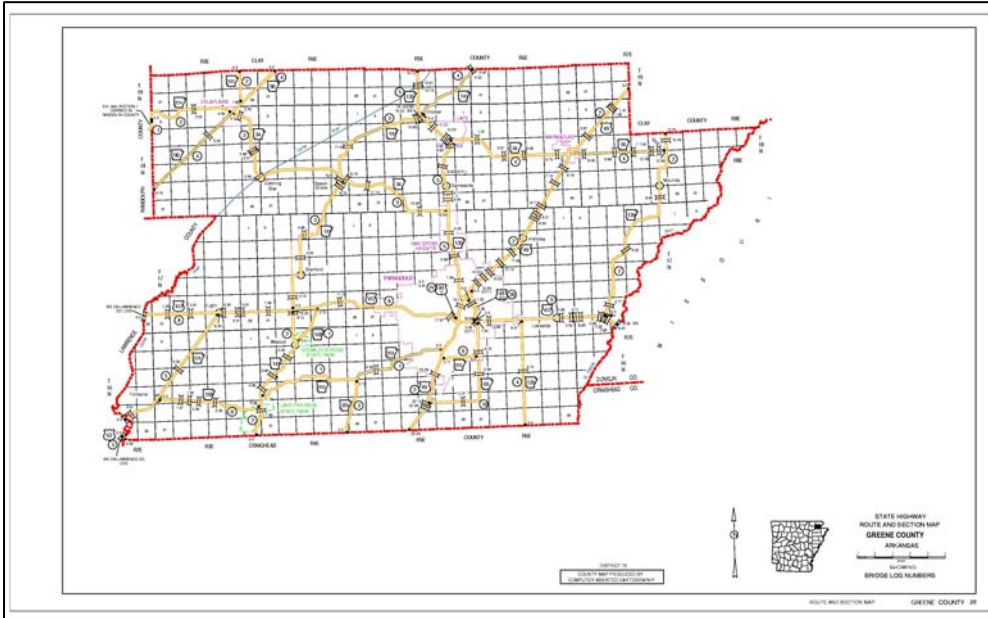


County Base Maps



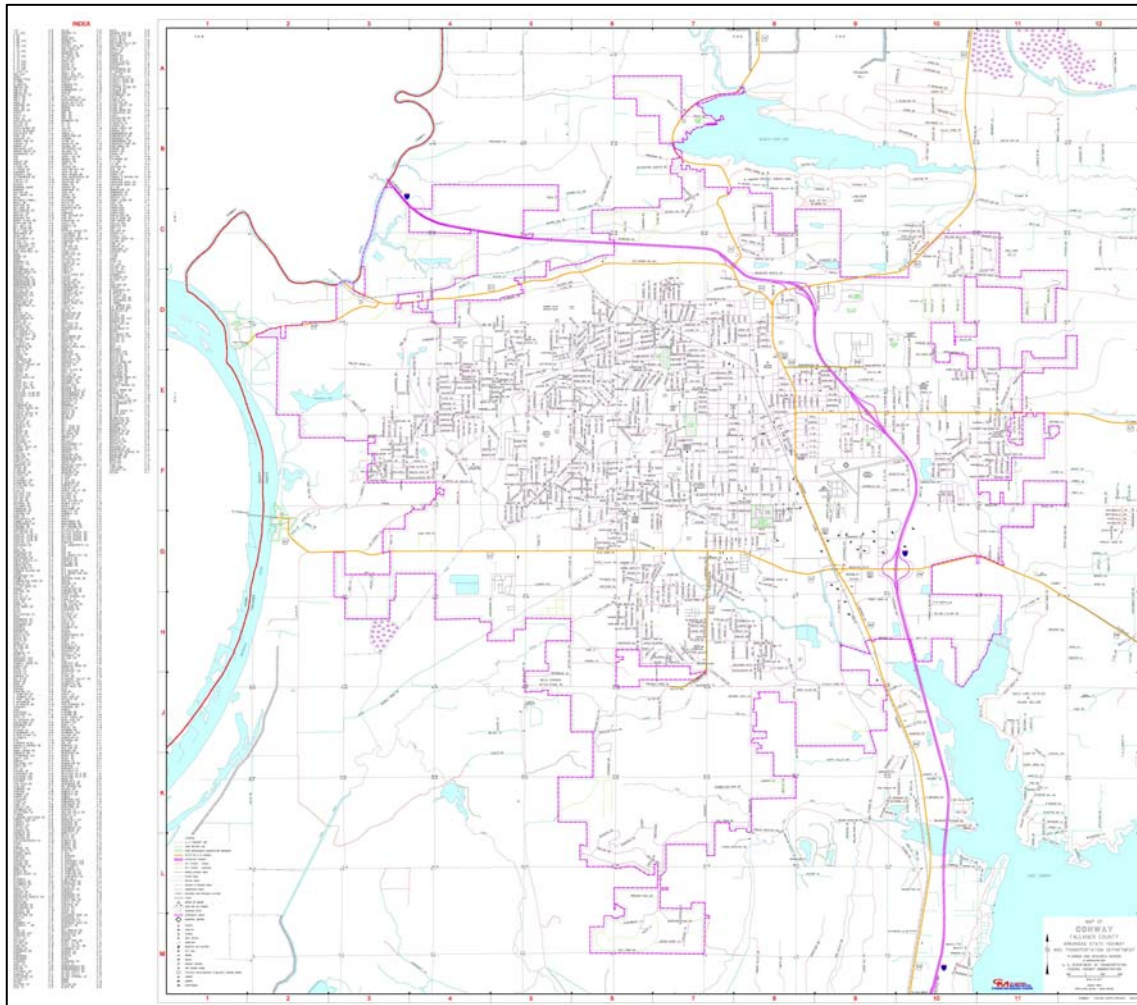


County Base Maps



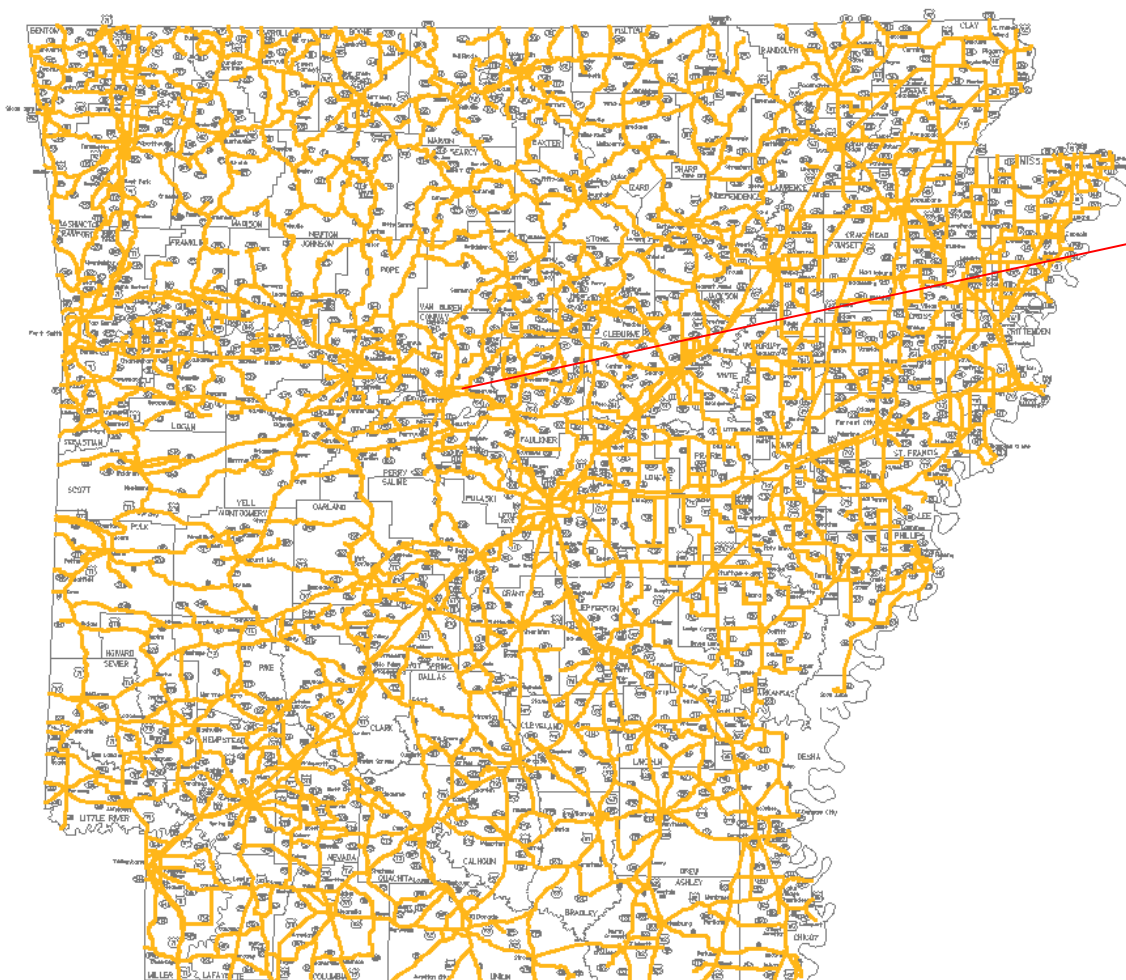


City Base Maps





Linear Referencing System



hwY Properties

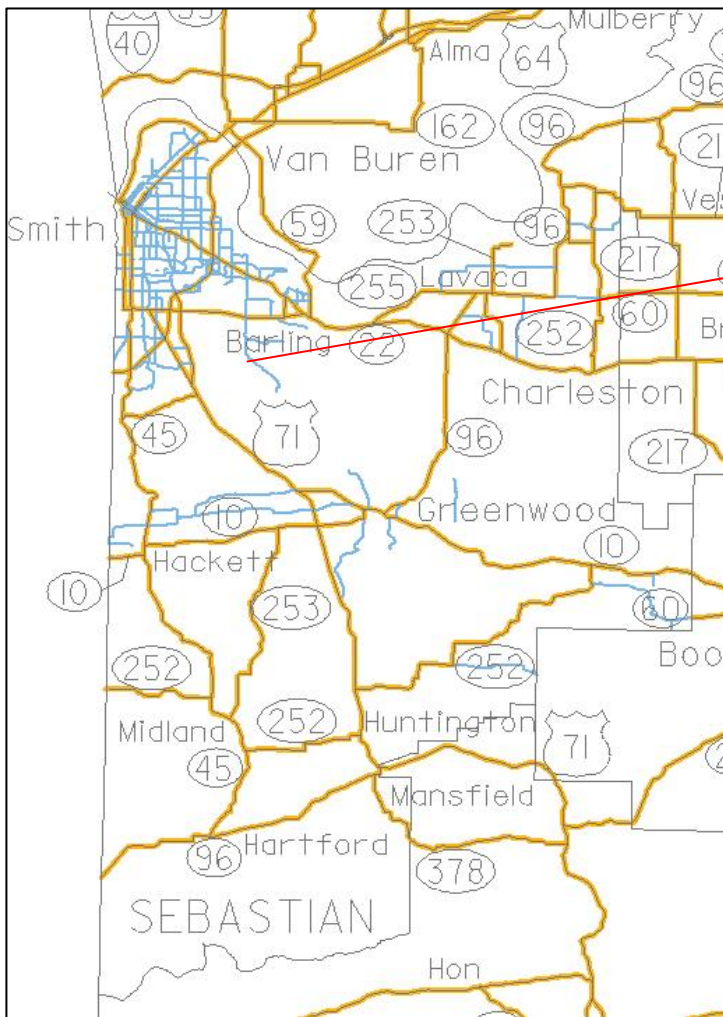
General Attributes

Name	Value
mslink	3510
district	8
county	15
route	40
sectn	310
segnum	5
beglm	112.5
rdlength	7.79
x_begpoint	133.537486
y_begpoint	219.562055
hwy_len	7.73
x_endpoint	140.722075
y_endpoint	217.521362
mapid	100432
old_rt	
old_sect	
rename_flag	
date_loaded	
loaded_flag	Y
road_in2	1540310
road_id	15x00040x310
lc_flag	2
HeavyHaul	y
aka1	
aka2	
aka3	
aka4	
aka5	
aka6	
endlm	120.29

Close



Linear Referencing System



Sebastian_Centerlines Properties

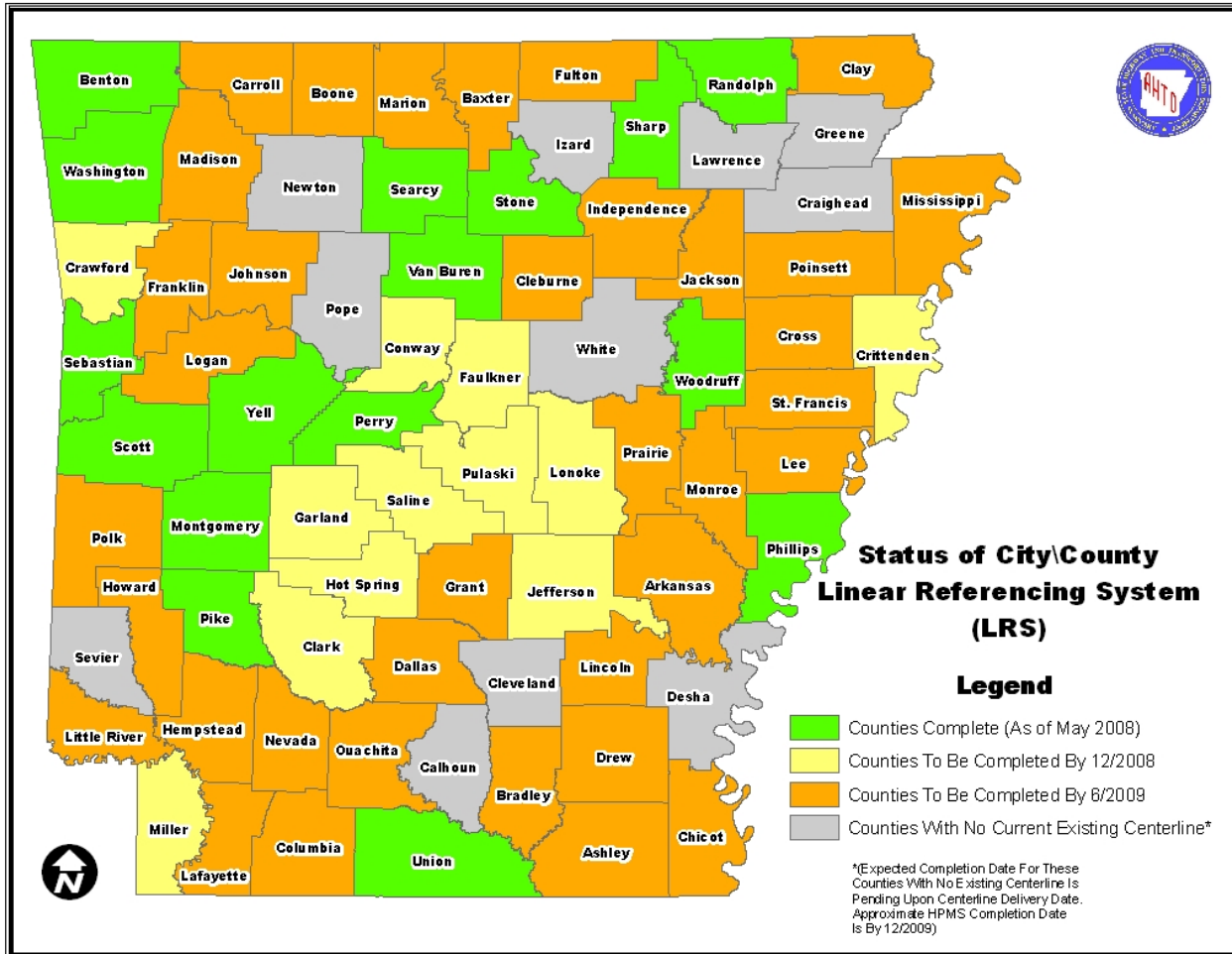
General Attributes

Name	Value
OBJECTID	169771
PL_ADD_F	
PL_ADD_T	
PR_ADD_F	
PR_ADD_T	
PRE_DIR	
PSTR_NAM	
PSTR_TYPE	Pvt
PSUF_DIR	
CITY_L	Fort Smith
CITY_R	Fort Smith
ZIP5_L	
ZIP5_R	
UNIQUE_ID	169771
META_ID	24550
A1_DRPR	
A1_STR	
A1_STYP	
A1_DRSF	
A2_DRPR	
A2_STR	
A2_STYP	
A2_DRSF	
A3_DRPR	
A3_STR	
A3_STYP	
A3_DRSF	
SRC_CODE	10
SRC_DESC	Geometry compile
NSSDA	Y
NSSDA_SRC	AGIO
NSSDA_VAL	2
BEGIN_DATE	2/2/2006 12:00:00
END_DATE	
EDIT_DATE	
EDIT_DESC	
EDIT_SRC	
ID1	17807
County	65
Route	SMASS
Section	A00
BegMile	2.51
EndMile	5.34
Graphic_Length	2.83

OK Cancel

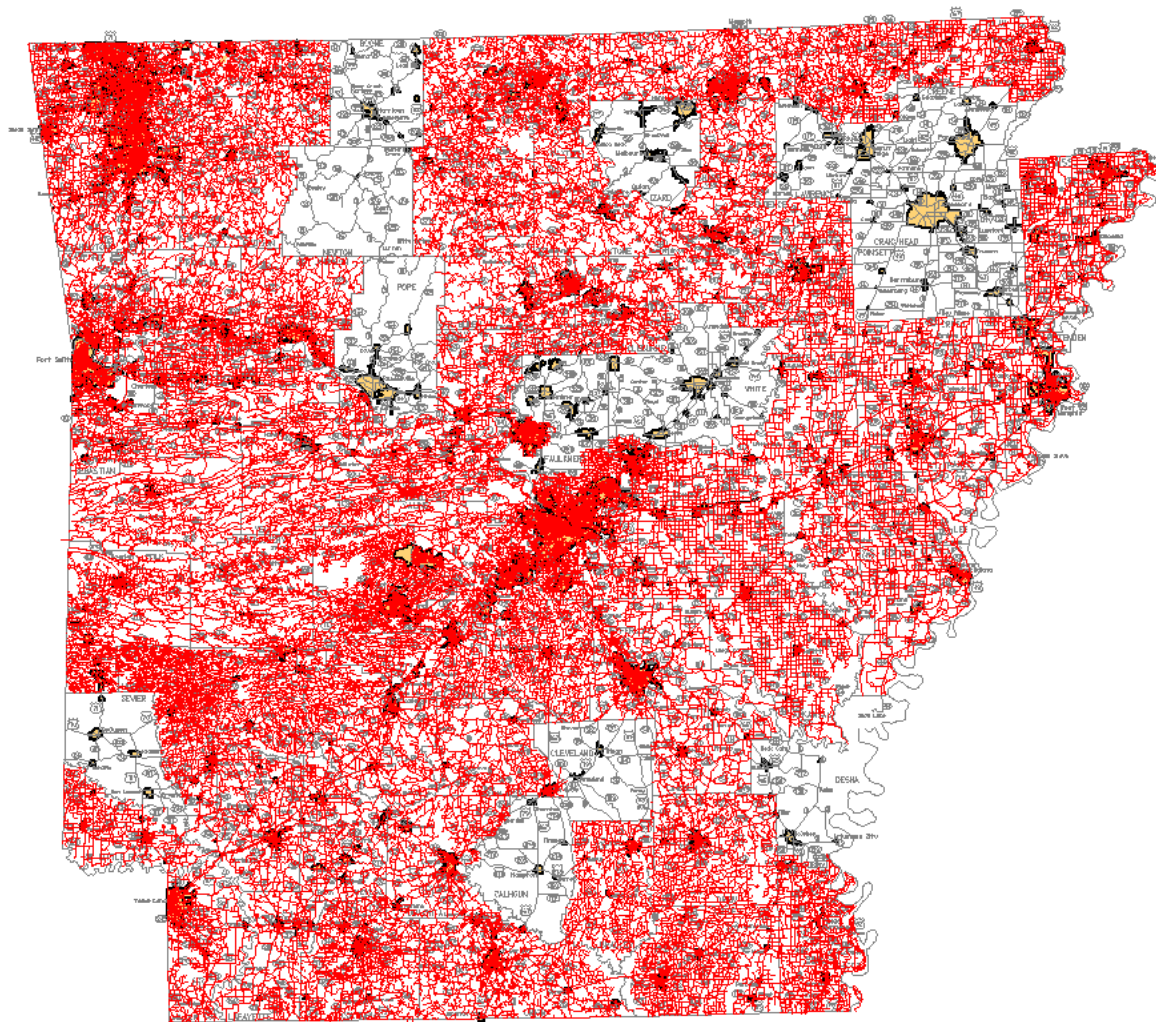


Linear Referencing System





Arkansas Centerline Program





ARAN Collection Accuracy





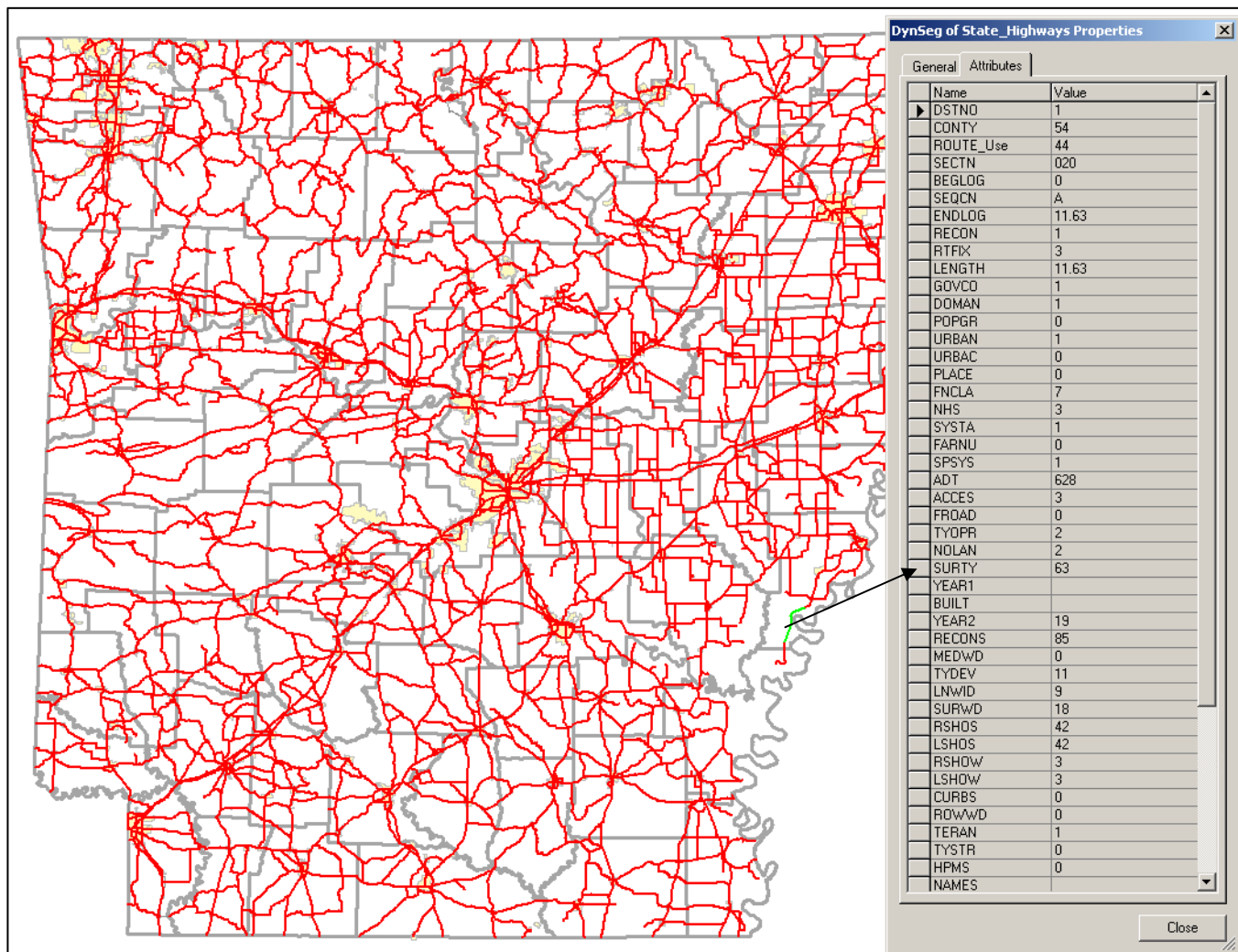
Dynamic Segmentation

Key Fields Needed:

- County
- Route
- Section
- Log Mile (Beginning and Ending for Linear Segmenting)

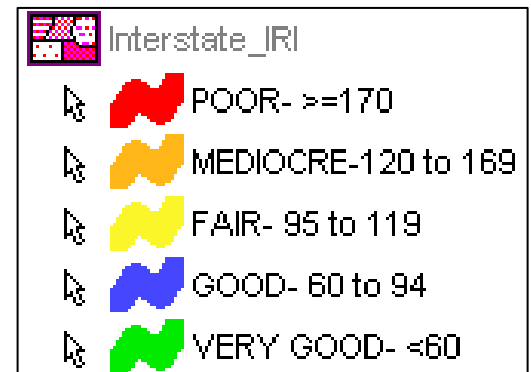
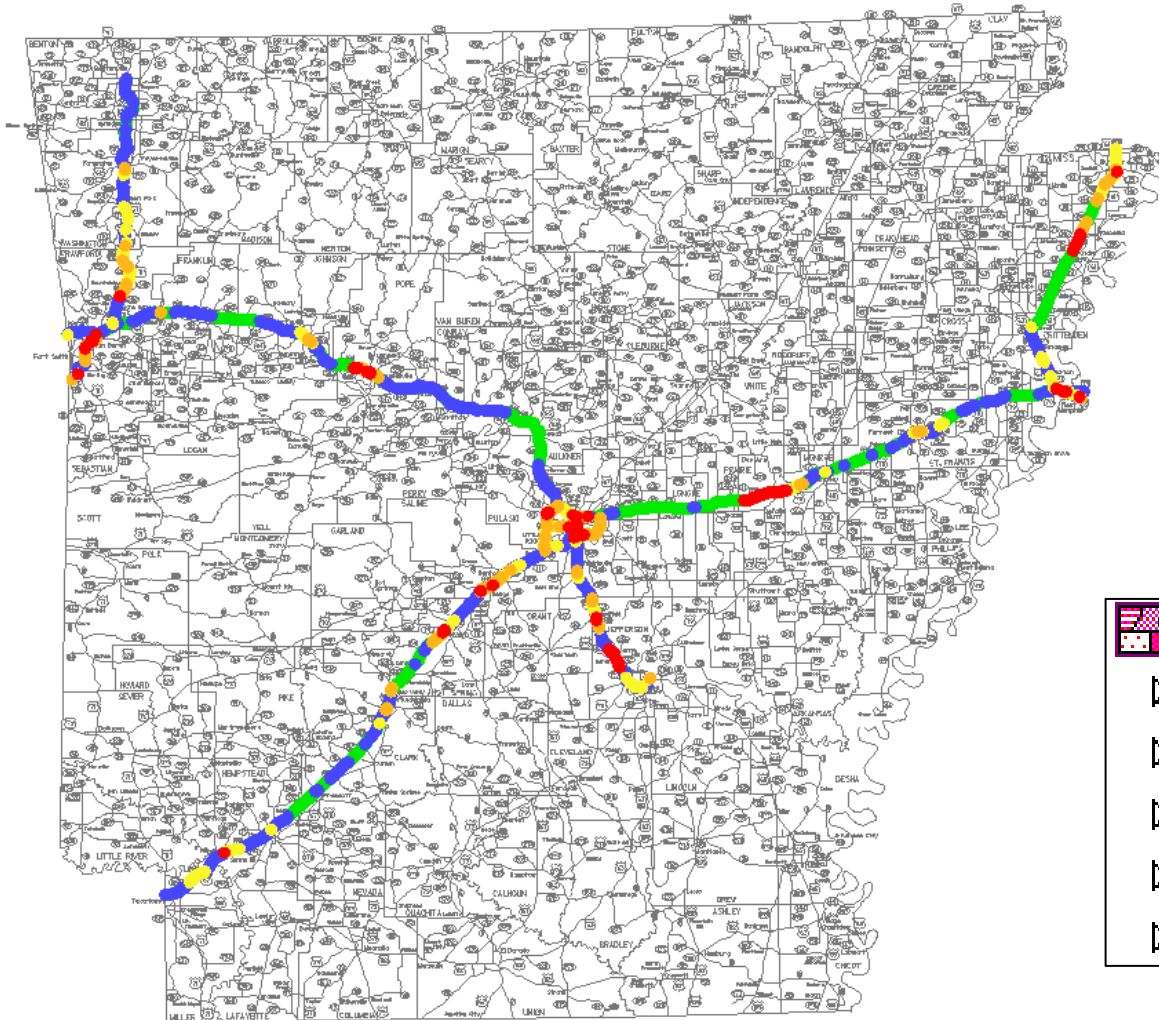


Dynamic Segmentation



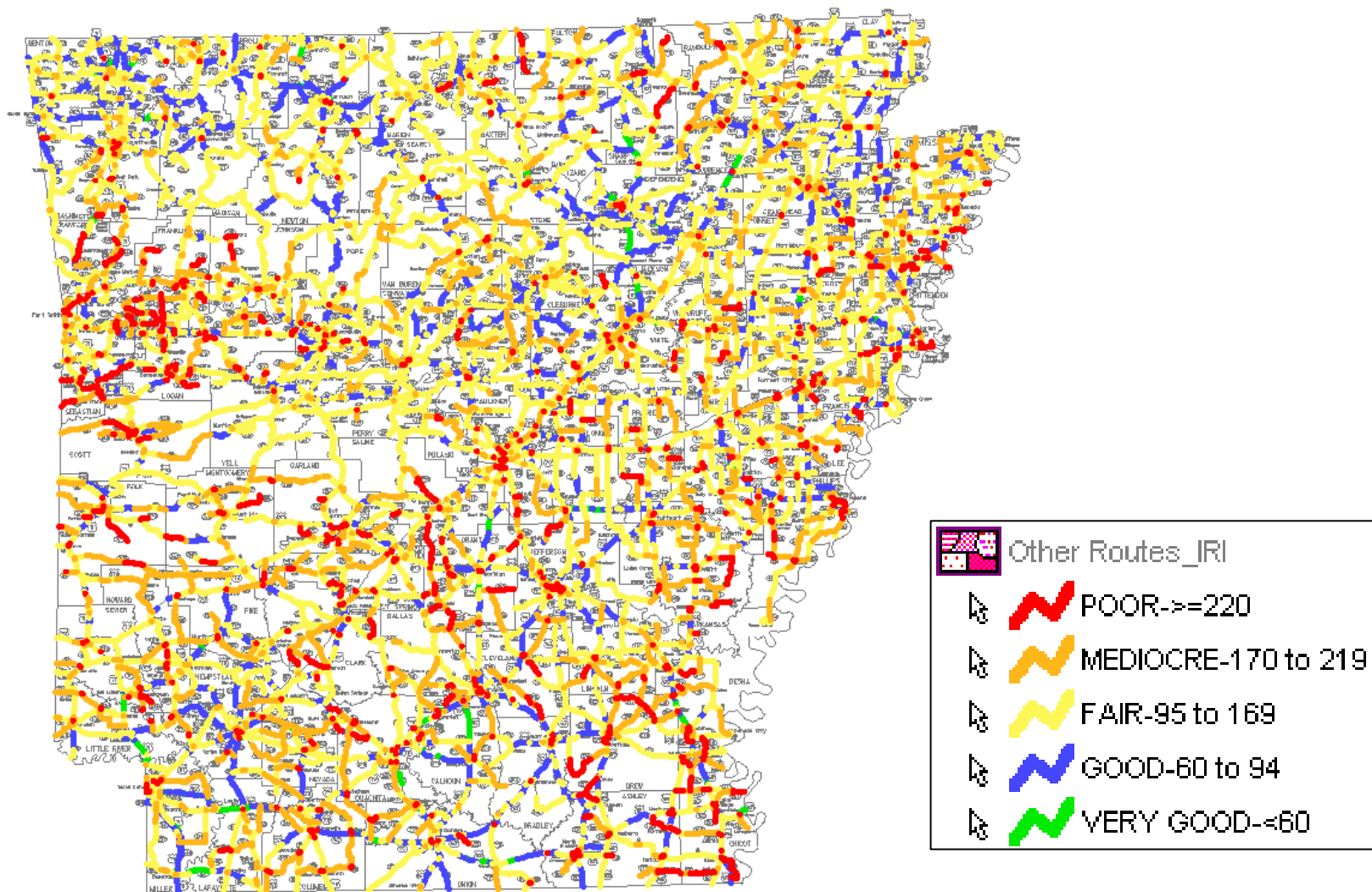


Interstate International Roughness Index (IRI)



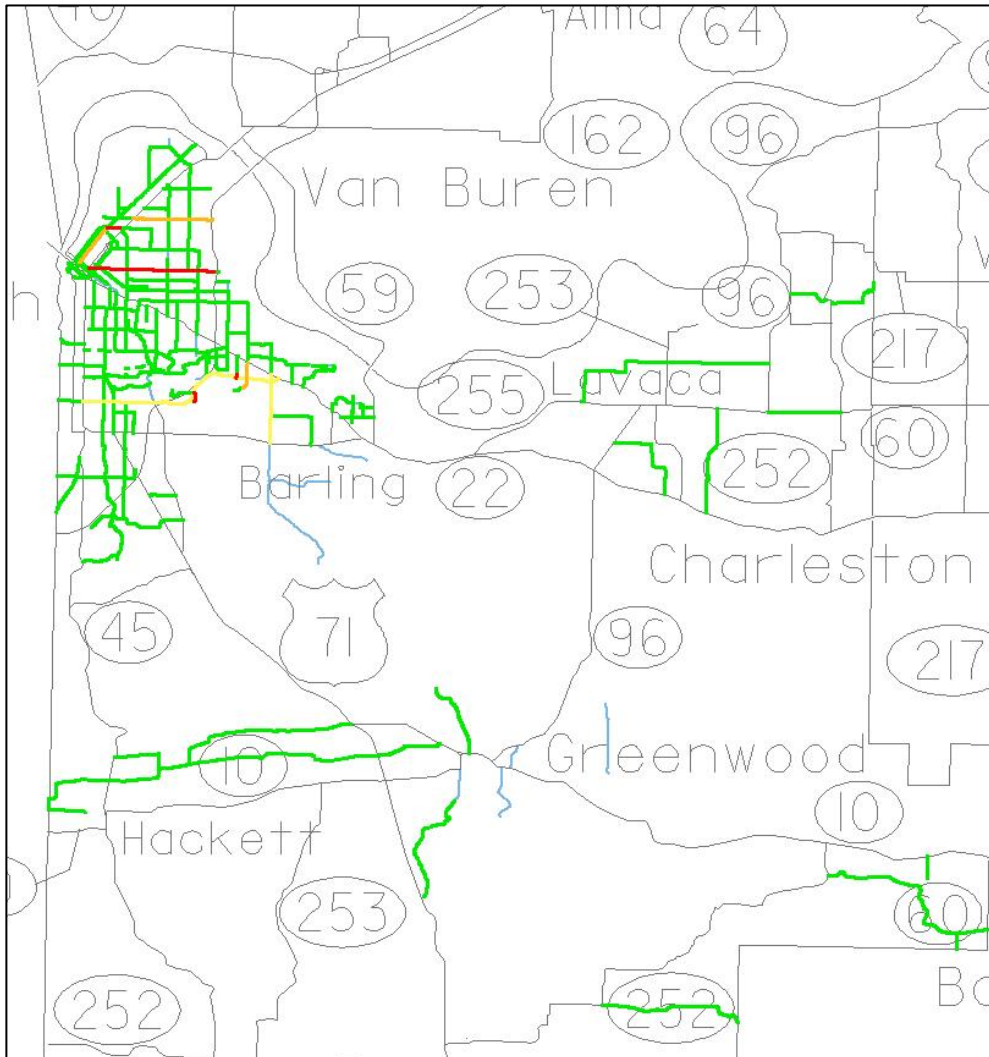


Other Highway International Roughness Index (IRI)



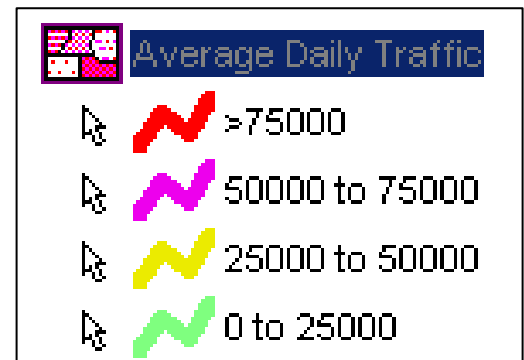
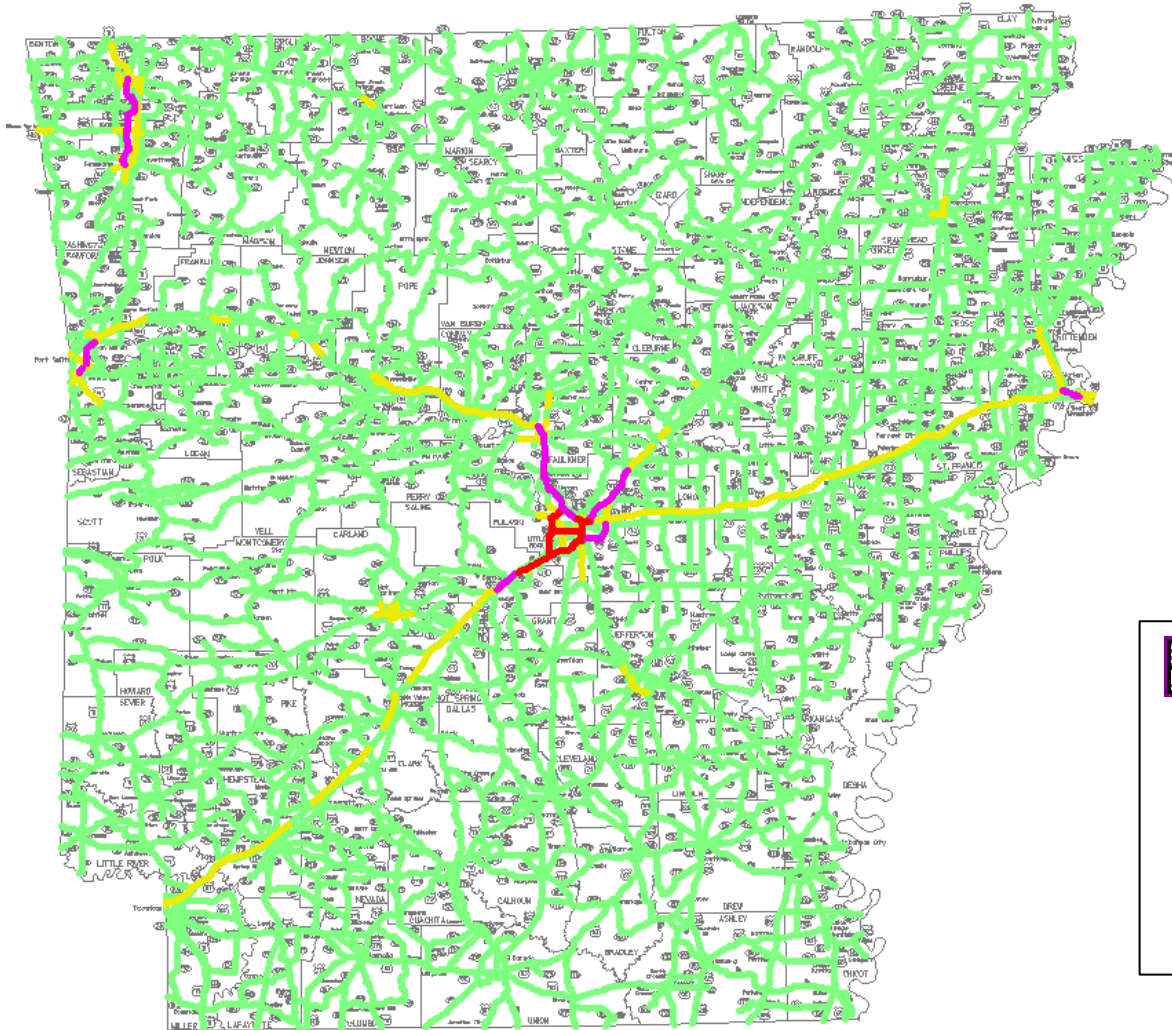


Other Federally Funded Routes International Roughness Index (IRI)



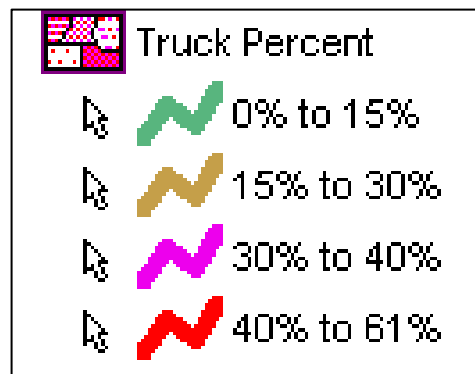
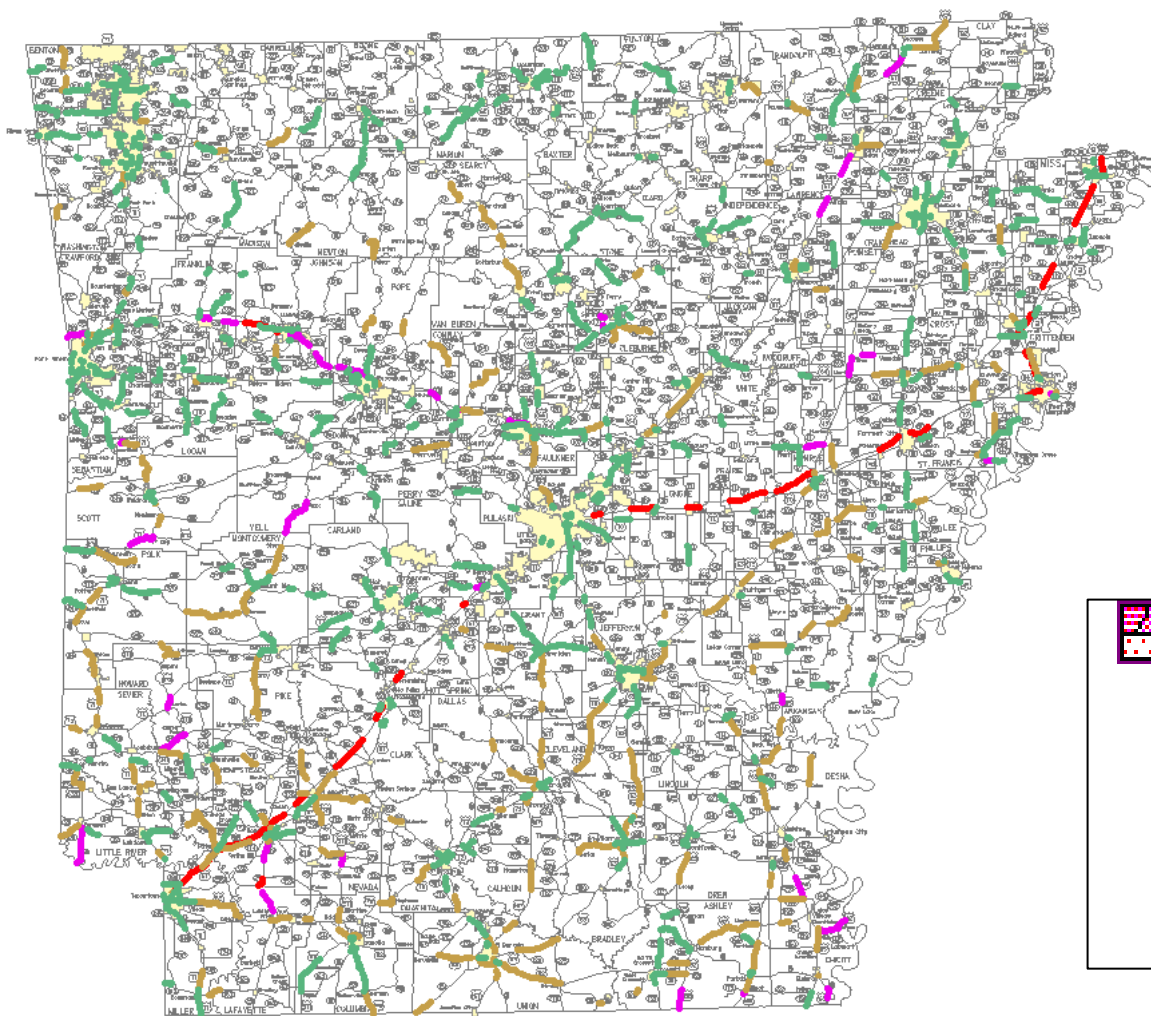


Additional Data-Average Daily Traffic



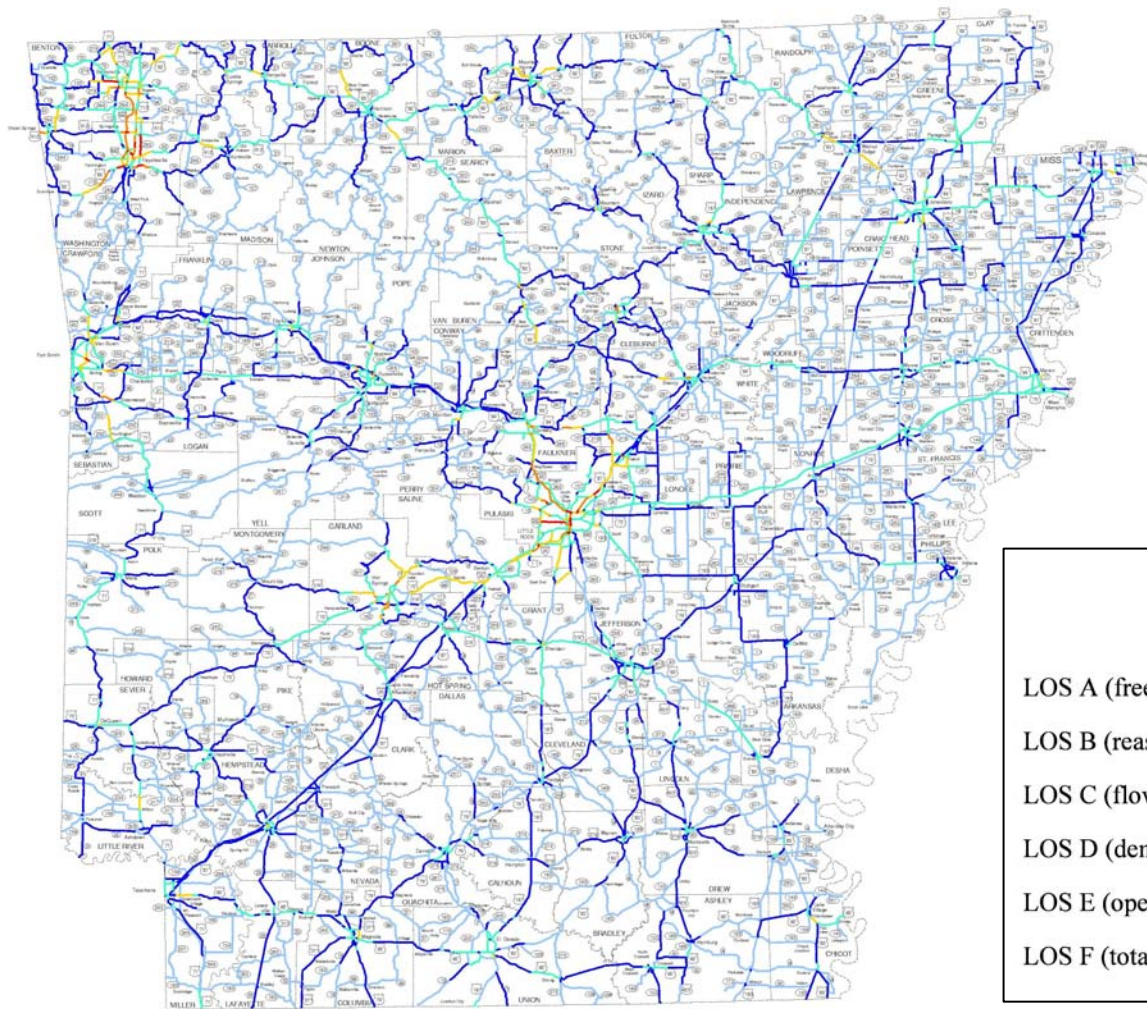


Additional Data-Truck Percent











Additional Data-Level of Service

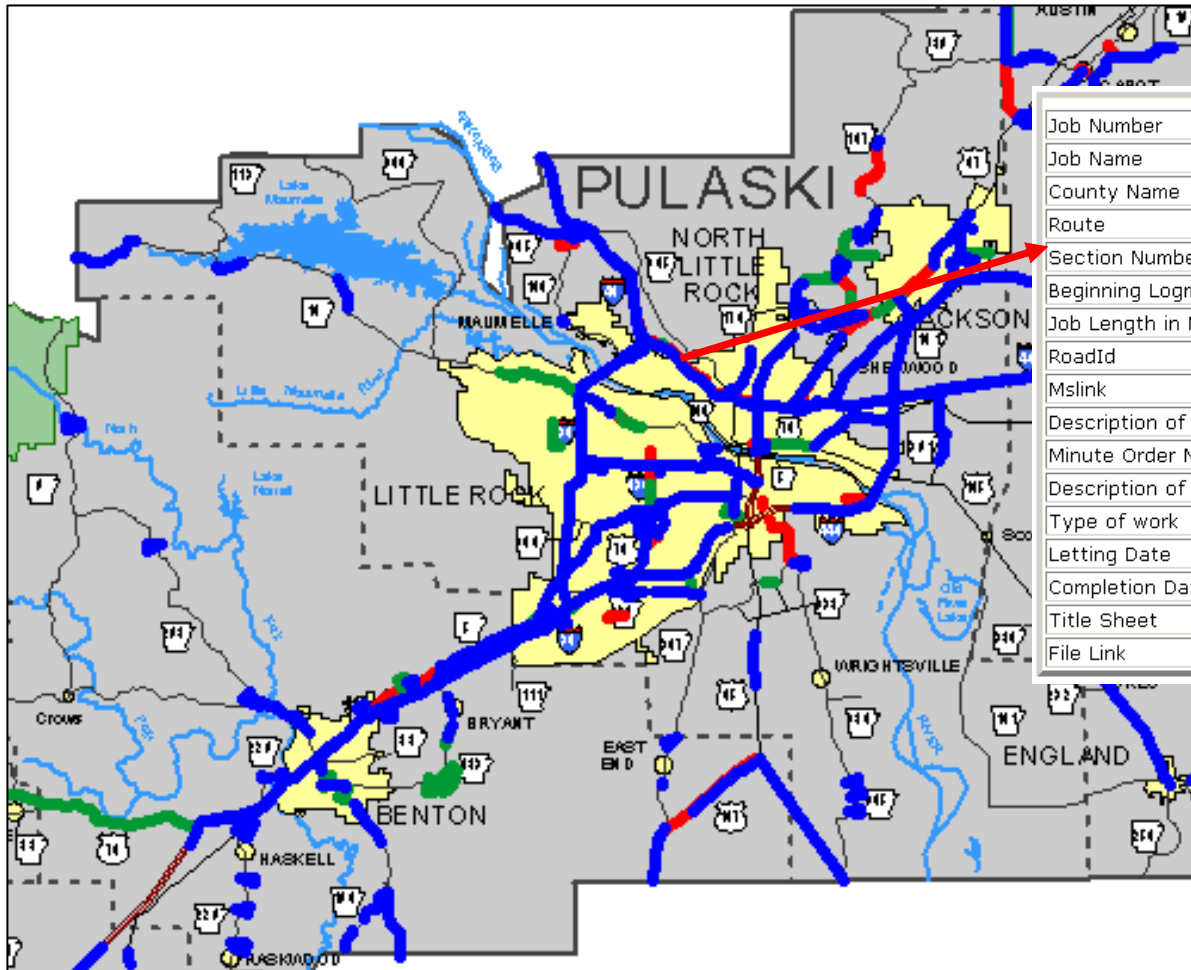


LEVELS OF SERVICE 2006

- LOS A (free-flow conditions) 
- LOS B (reasonably free-flow) 
- LOS C (flow speeds at or near free-flow) 
- LOS D (density increases quickly) 
- LOS E (operations are at capacity) 
- LOS F (total breakdown in flow) 



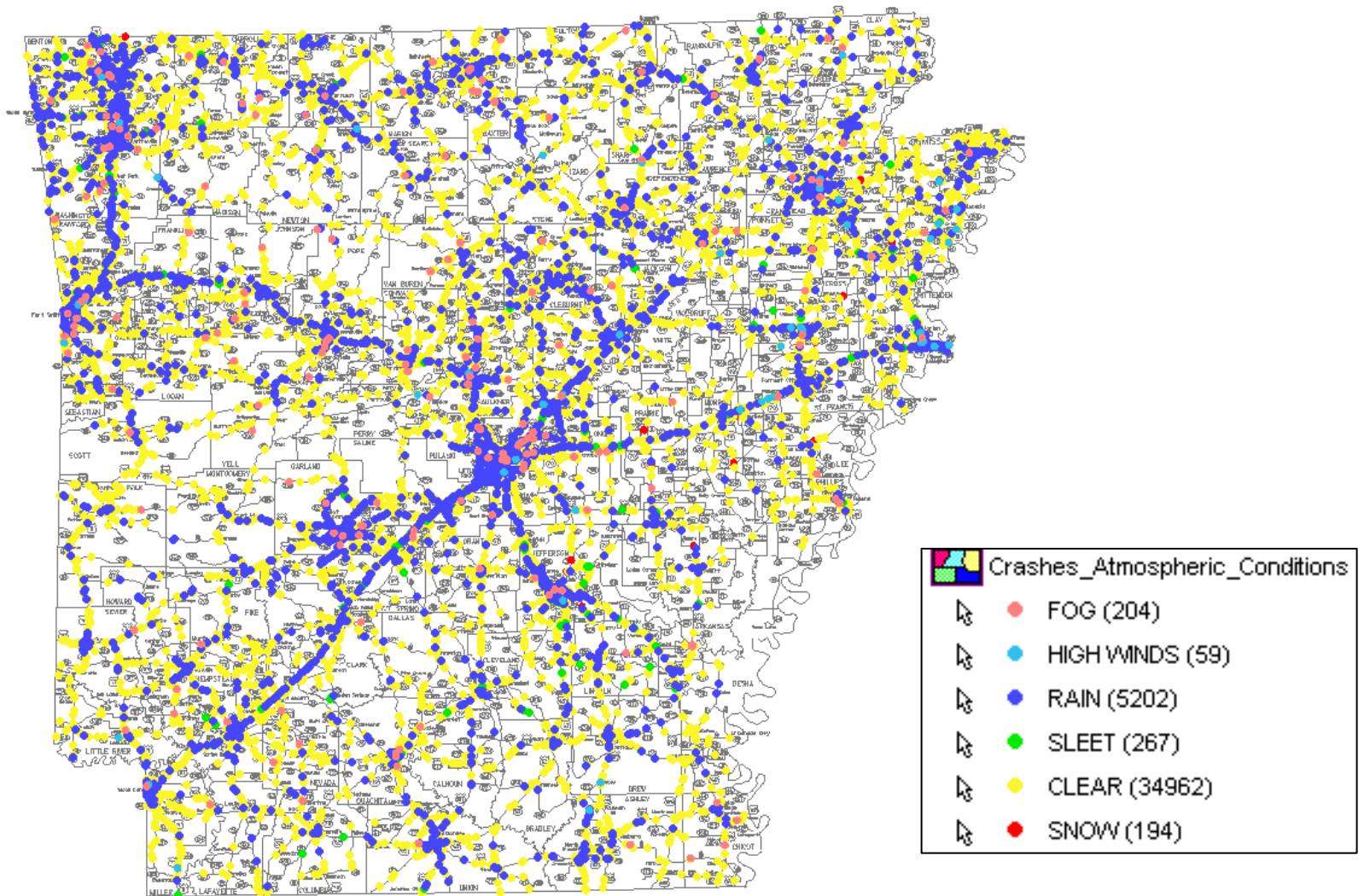
Additional Data-Job Status



Job Number	060829
Job Name	DIST. 6 CONC. PVMT. PATCHING (SEL.SEC.)(S)
County Name	SALINE
Route	30
Section Number	220
Beginning Logmile	0
Job Length in Miles	0
RoadId	62x00030x220
Mslink	11779
Description of Job Status	Completed
Minute Order Number	1996-190
Description of Location	SELECTED SECTIONS & BRIDGES
Type of work	REHAB.
Letting Date	199705
Completion Date	199910
Title Sheet	\ DOCS
File Link	\ DOCS



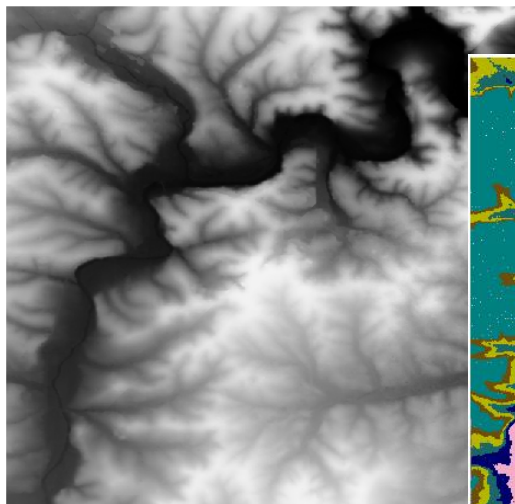
Additional Data-Crash Data



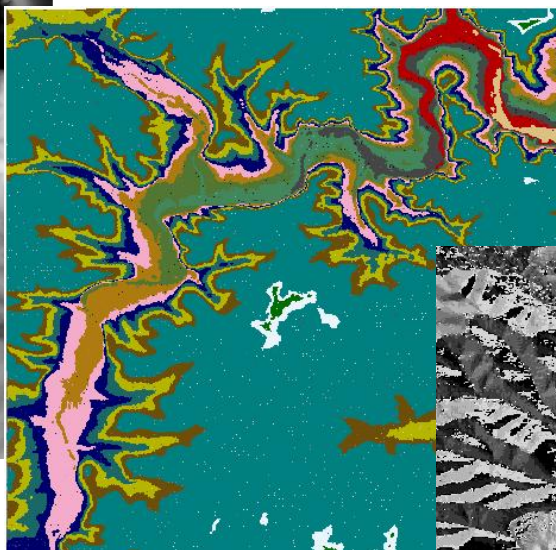


Other Resources – Elevation (10 Meter DEMs Statewide)

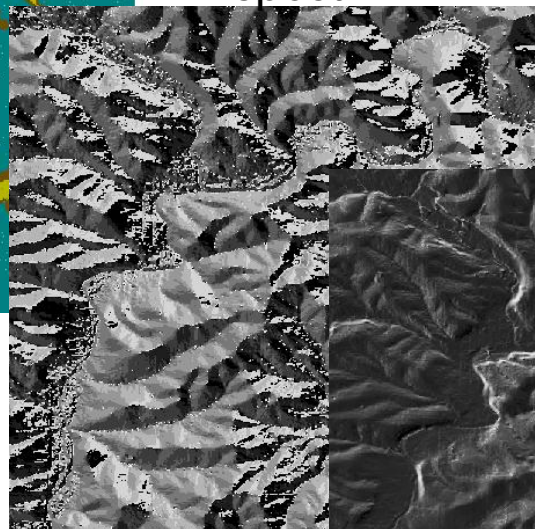
Original DEM



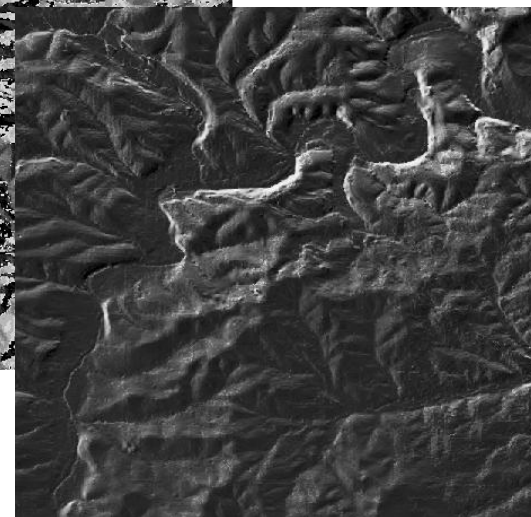
Vector Elevation



Aspect

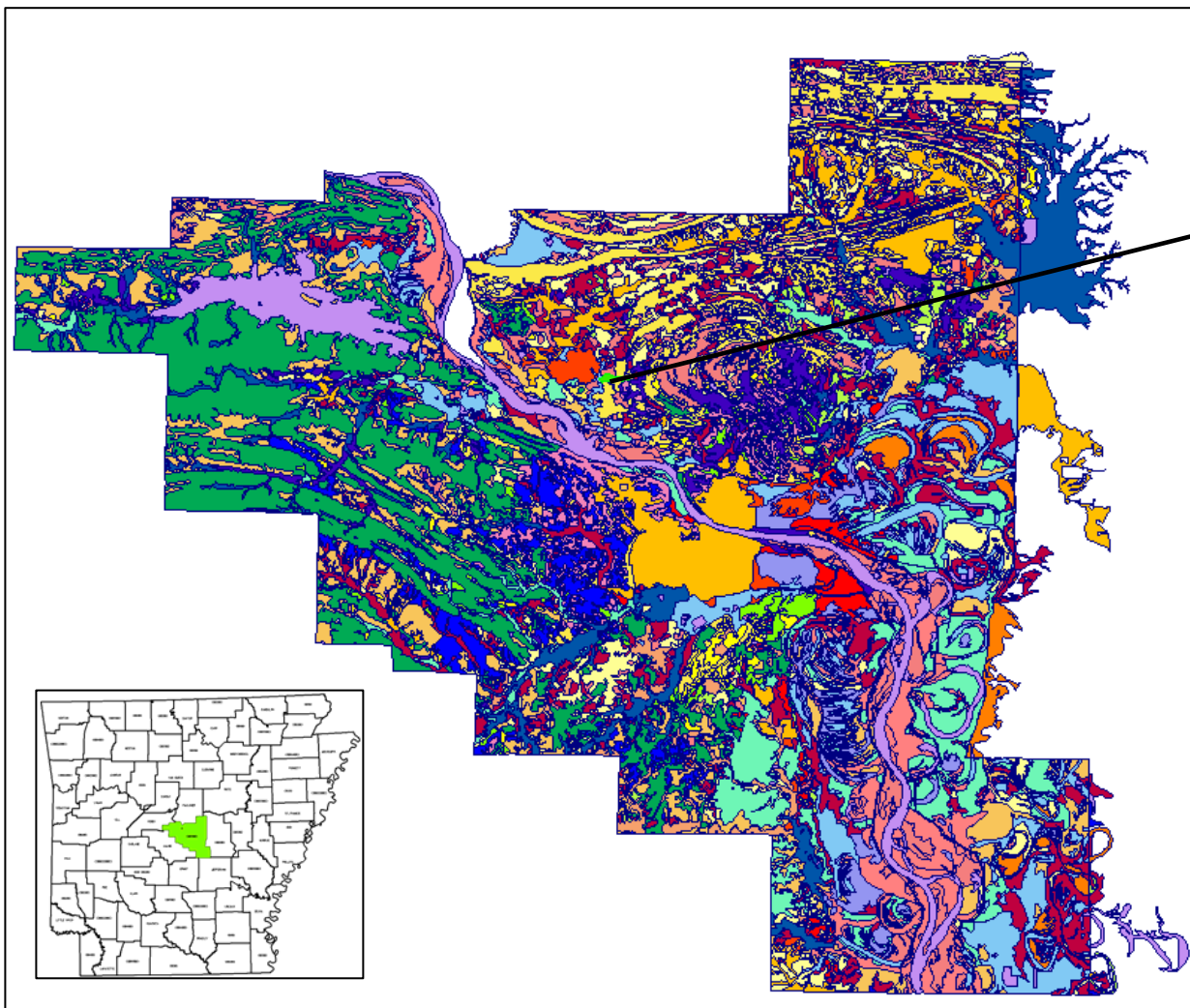


Shaded Relief





Other Resources – SSURGO Certified Soil Data

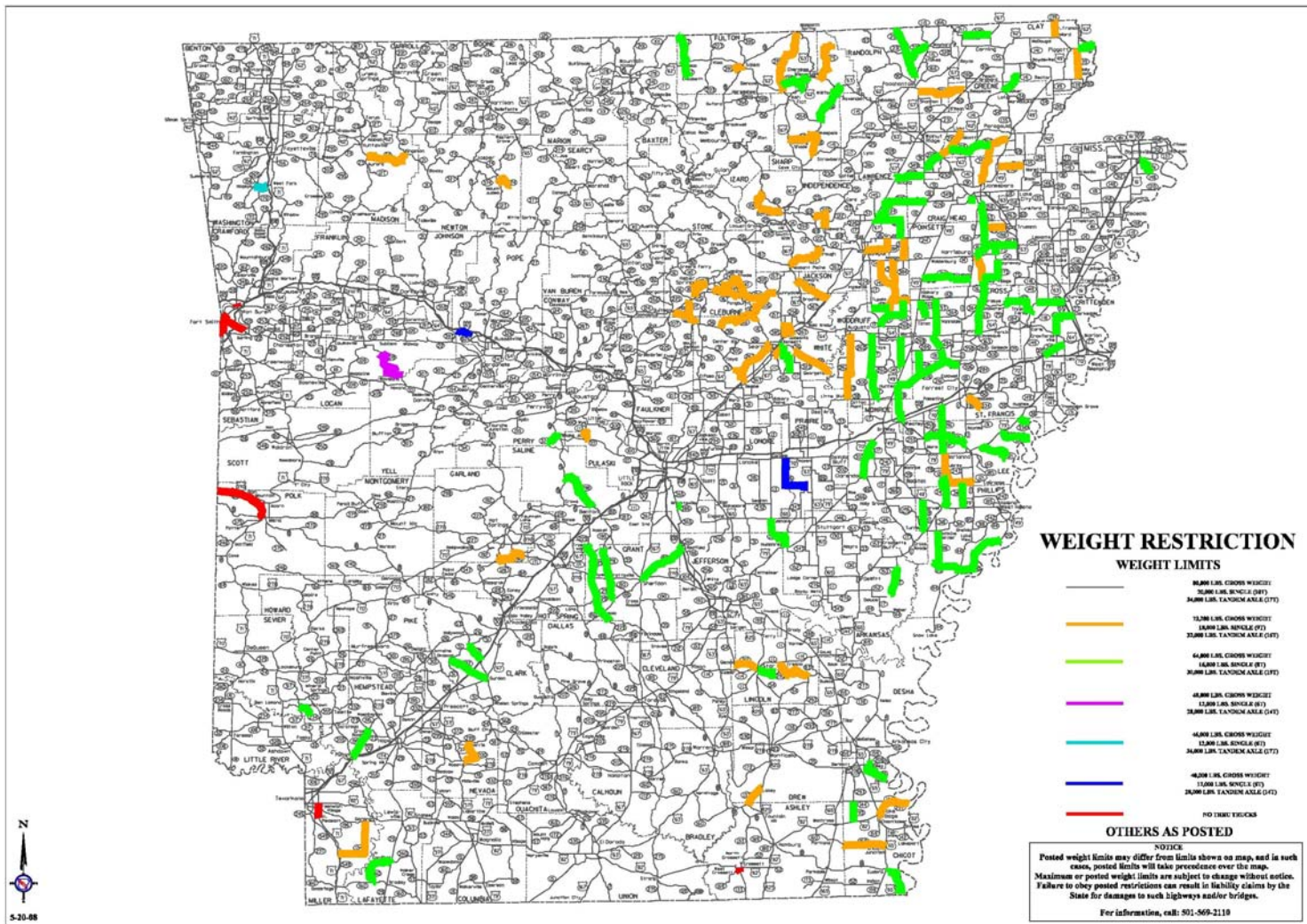


Pulaski_Soils Properties

General		Attributes
Name	Value	
OBJECTID	10346	
MUSYM	GeB	
MUKEY	566176	
MUNAME	GUTHRIE-LEADVALE COMPLEX, UNDULATING	
TEXTURE	SIL	
TEXTDESC	silt loam	
HZNAME	H1	
DESNDISC	0	
DESNGMASTE	H	
DESNGPRIME		
DESNGVERT	1	
HZDEPT_L	0	
HZDEPT_R	0	
HZDEPT_H	0	
HZDEPB_L	0	
HZDEPB_R	5	
HZDEPB_H	0	
HZTHK_L	0	
HZTHK_R	0	
HZTHK_H	0	
FRAGGT10_L	0	
FRAGGT10_R	0	
FRAGGT10_H	0	
FRAG3_10_L	0	
FRAG3_10_R	0	
FRAG3_10_H	0	
SIEVE4_L	100	
SIEVE4_R	100	
SIEVE4_H	100	
SIEVE10_L	100	
SIEVE10_R	100	
SIEVE10_H	100	
SIEVE40_L	90	
SIEVE40_R	95	
SIEVE40_H	100	
SIEVE200_L	85	
SIEVE200_R	90	
SIEVE200_H	95	
SANDTOT_L	0	
SANDTOT_R	13.60000038	
SANDTOT_H	0	

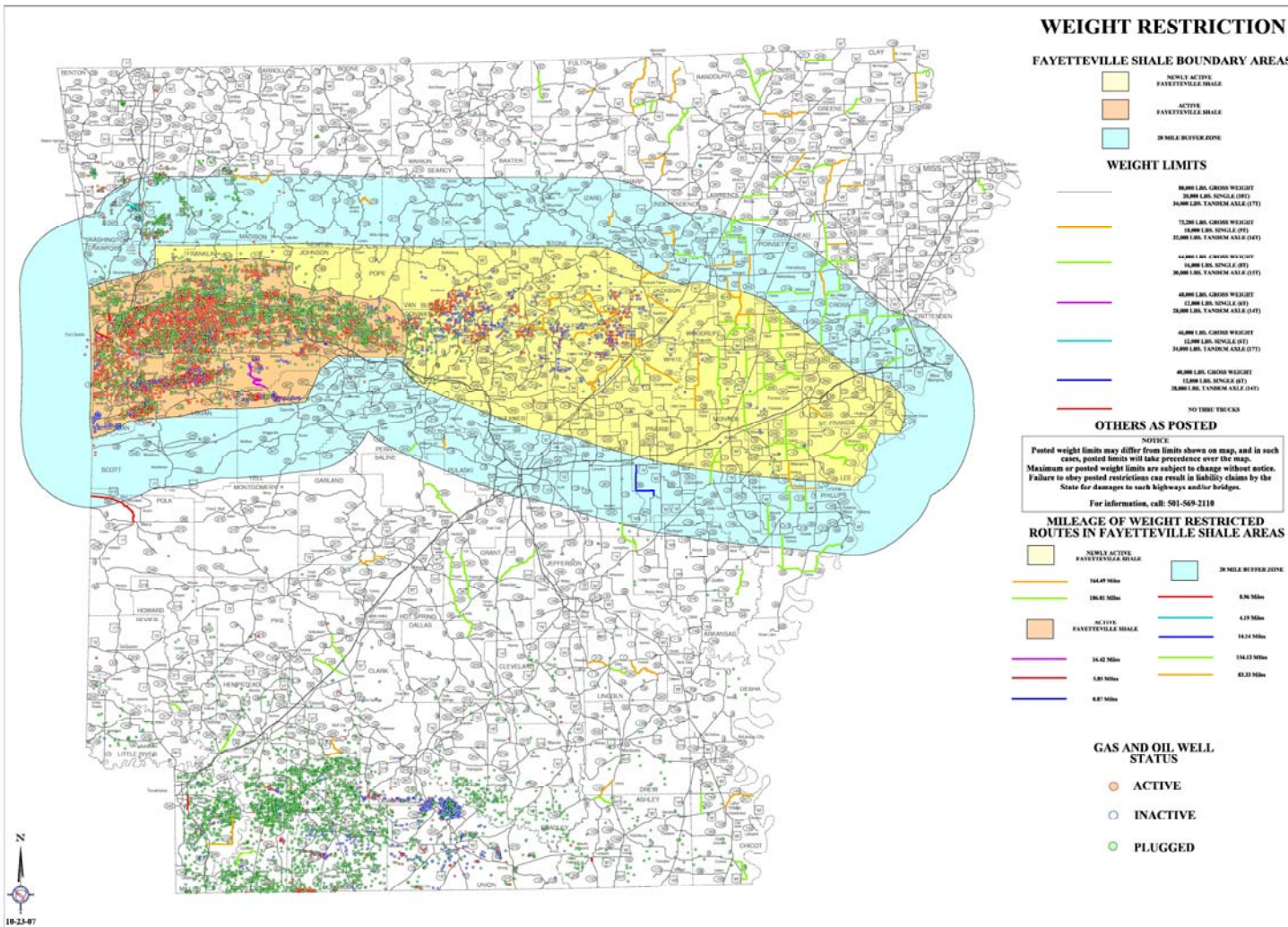


Additional Data - Weight Restricted Routes



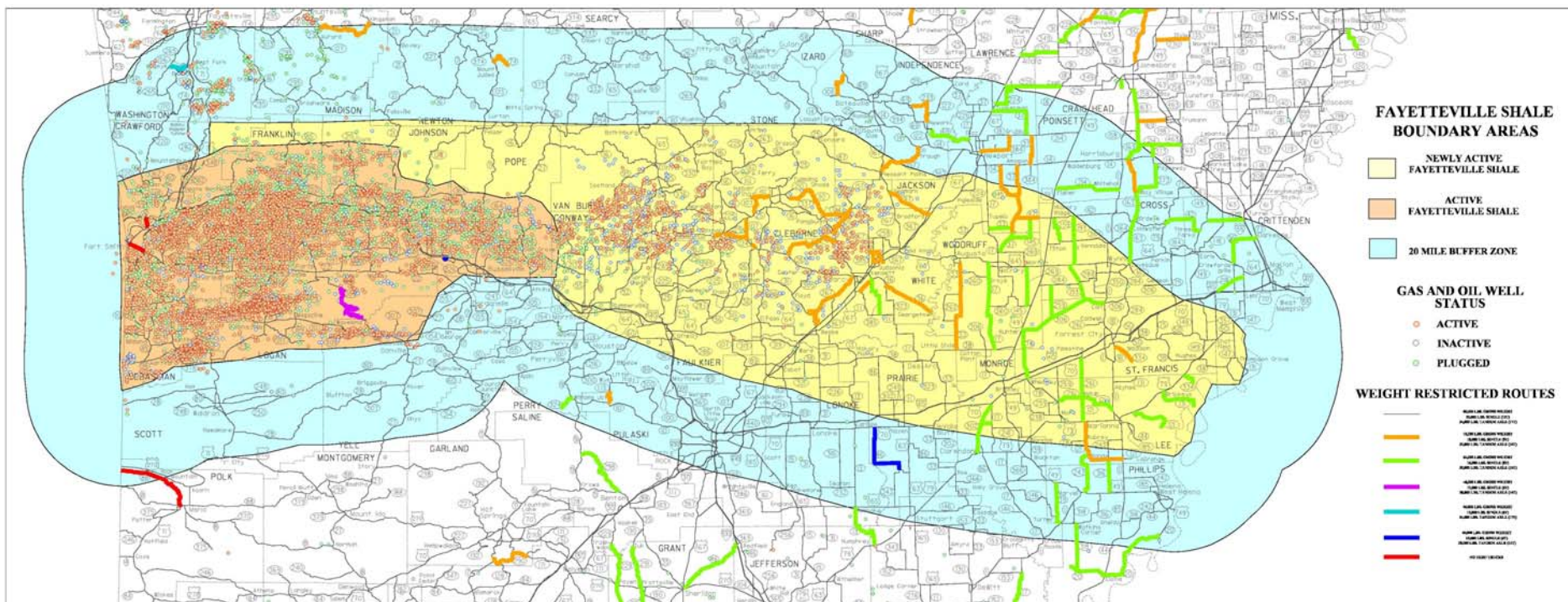


Weight Restricted Routes/Fayetteville Shale



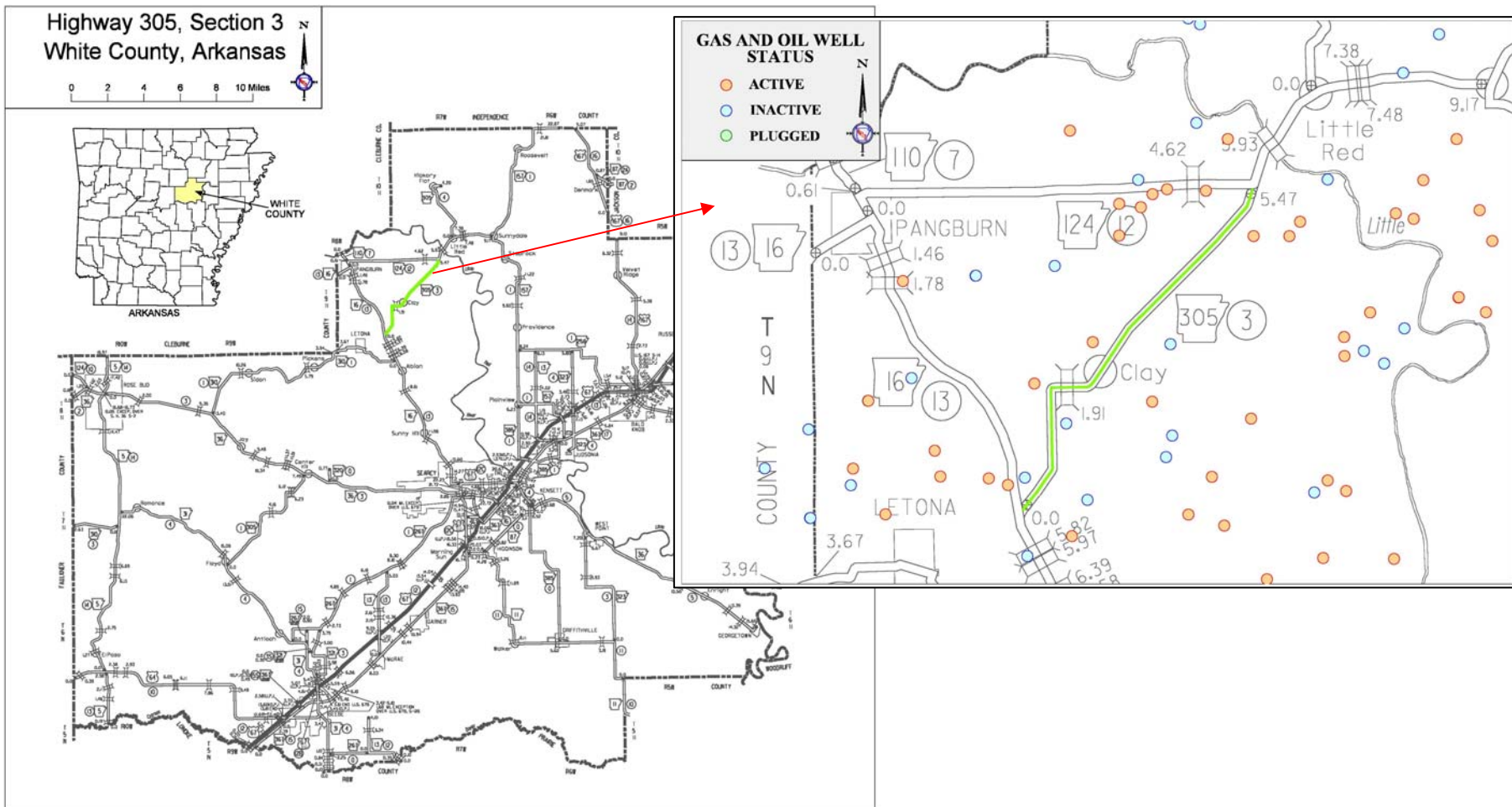


Weight Restricted Routes/Fayetteville Shale





Weight Restricted Routes/Fayetteville Shale



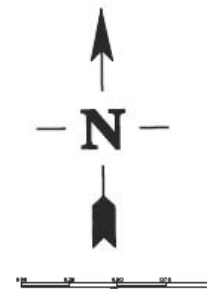
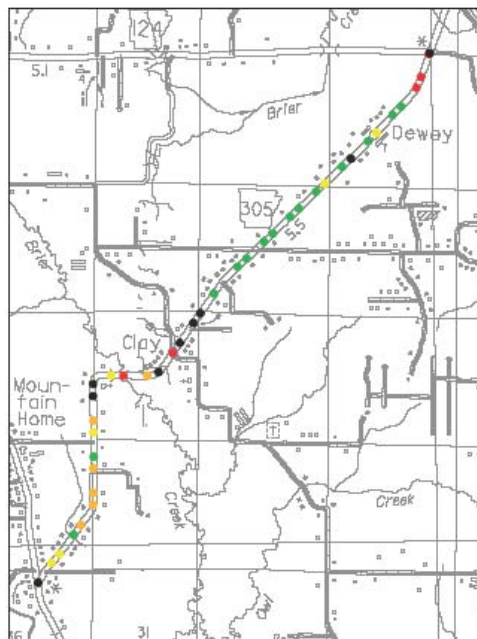


Other Resources – Falling Weight Deflectometer (FWD)

Route 305 Sec. 3, White County

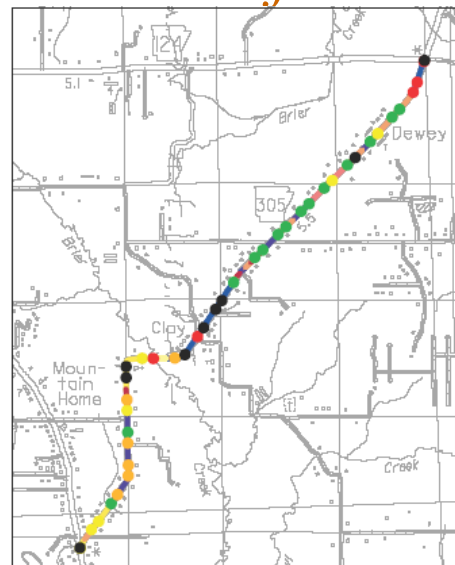
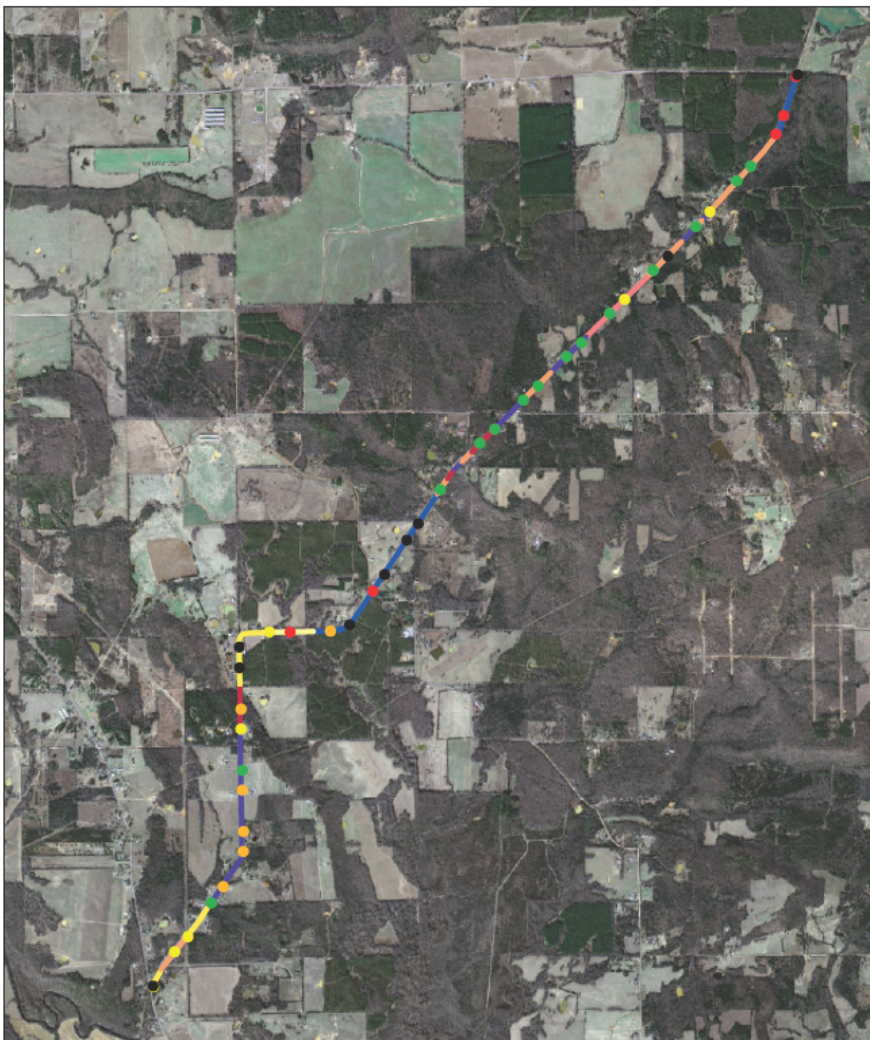
Remaining Life-Existing Traffic (Years)

- 0 to 2
- 2 to 5
- 5 to 10
- 10 to 20
- 20 +



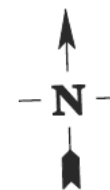
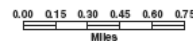


Other Resources – FWD & SSURGO Certified Soil Data



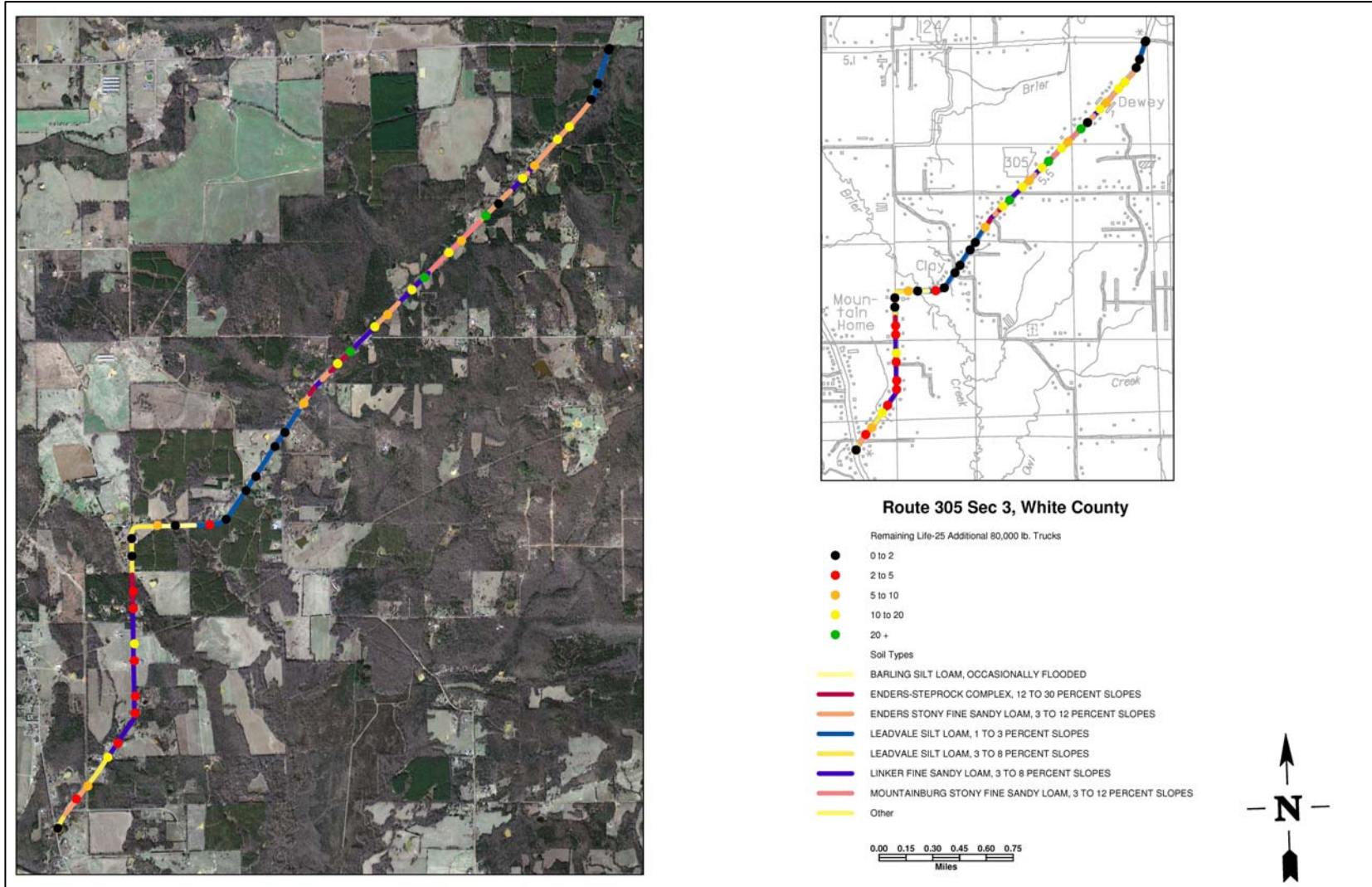
Route 305 Sec 3, White County

- Remaining Life-Existing Traffic**
- 0 to 2
 - 2 to 5
 - 5 to 10
 - 10 to 20
 - 20 +
- Soil Types**
- BARLING SILT LOAM, OCCASIONALLY FLOODED
 - ENDERS-STEPROCK COMPLEX, 12 TO 30 PERCENT SLOPES
 - ENDERS STONY FINE SANDY LOAM, 3 TO 12 PERCENT SLOPES
 - LEADVALE SILT LOAM, 3 TO 3 PERCENT SLOPES
 - LEADVALE SILT LOAM, 3 TO 8 PERCENT SLOPES
 - LINKER FINE SANDY LOAM, 3 TO 8 PERCENT SLOPES
 - MOUNTAINBURG STONY FINE SANDY LOAM, 3 TO 12 PERCENT SLOPES
 - Other



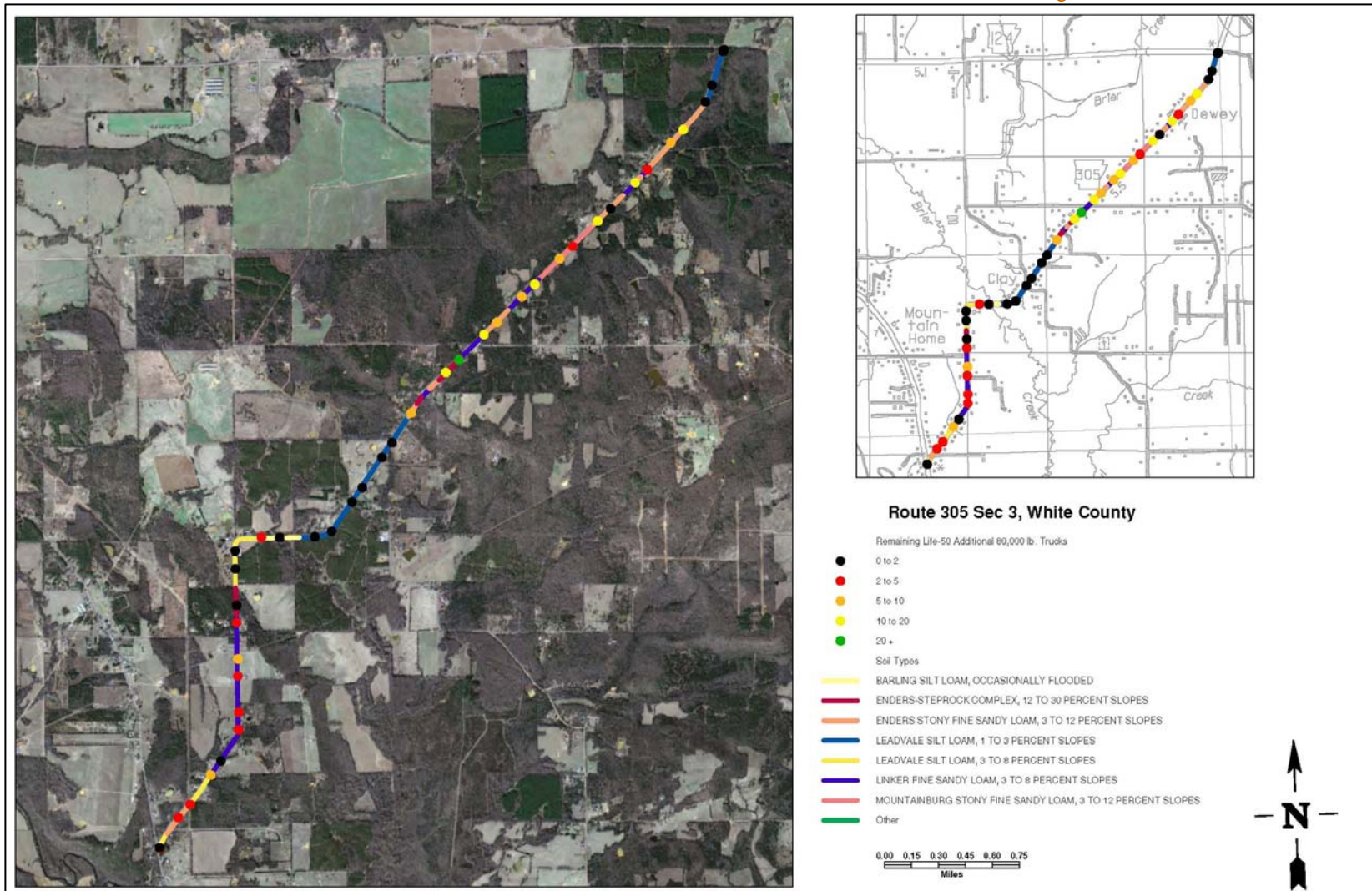


Other Resources – FWD & SSURGO Certified Soil Data



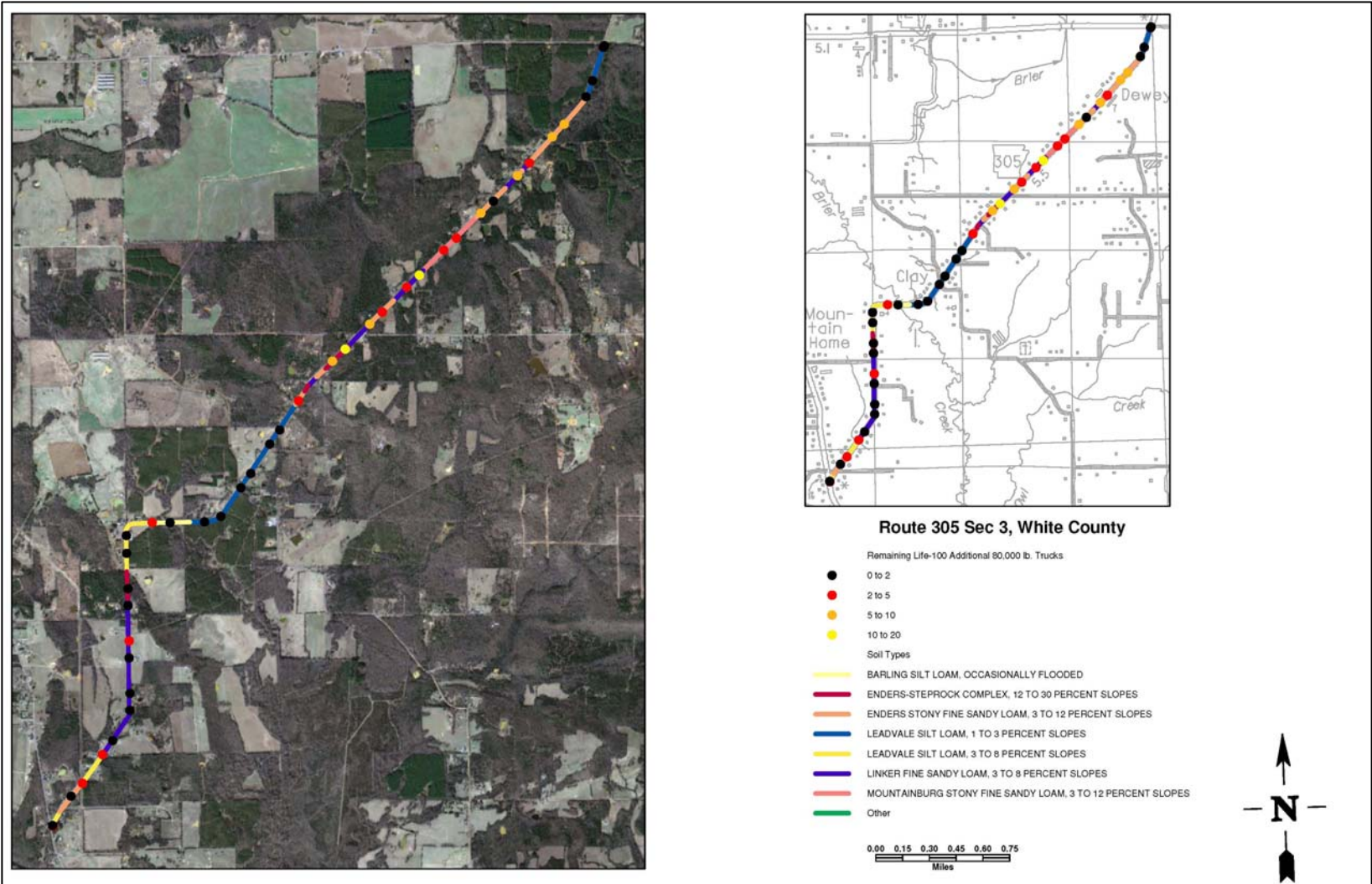


Other Resources – FWD & SSURGO Certified Soil Data





Other Resources – FWD & SSURGO Certified Soil Data





Arkansas GIS Data on the Web

www.geostor.arkansas.gov

GeoStor 5.0

Arkansas' Official GeoData Clearinghouse 

Login

Username:

Password:

[Click here to create a new account!](#)

[Forget your log in?](#)

Find Data



Map Viewer



Applications



FTP - Rasters



How To

- Disable pop-ups in your browser
- Connect to Map Services
- Save a Map or Email a Link to a Map
- Contact AGIO about loading your data into GeoStor
- Work with the XML metadata delivered with GeoStor downloads

Information

- About This Site
- Quick Start Guide
- Free GIS Data Viewers
- Contact Us

Home | Search | About This Site | Map Viewer

[Contact the GeoStor Team](#) with any questions or comments.
Before continuing, please disable your pop-up blocker for this site. Also, be sure to read the [disclaimer](#) and [privacy](#) statement.
Developed and administered by the [AGIO](#).



Arkansas GIS Data on the Web

http://www.geostor.arkansas.gov/Portal/DiscoveryServlet - Microsoft Internet Explorer

File Edit View Favorites Tools Help

Address <http://www.geostor.arkansas.gov/Portal/DiscoveryServlet> Go Links >>

fgdc
Federal Geographic Data Committee

Accept & Add To Cart
Decline & Close Window

HOSPITAL RELATED SERVICE 2006 (point)

SDE Feature Class - HEALT.HOSPITAL_RELATED_SERVICES_ADH

[Description](#) | [Graphic](#) | [Spatial](#) | [Data Structure](#) | [Data Quality](#) | [Data Source](#) | [Data Distribution](#) | [Metadata](#)

Description

Citation

Title: HOSPITAL RELATED SERVICE 2006 (point)
Originators: Arkansas Department of Health & Human Services
Publisher: AR Health and Human Services
Publication date: 20060717
Edition: 2006
Data type: vector digital data
Data location: <http://www.geostor.arkansas.gov/Portal/DiscoveryServlet?command=viewmetadata&outside='true'&uuid={BF24BAC0-BC5F-414F-89ED-2FFAC84A1663}>, http://www.geostor.arkansas.gov/Portal/FME/fmeDownload.jsp?user=&outside=true&oLayer=HEALT.HOSPITAL_RELATED_SERVICES_ADH,Vector,Multipoint, <http://www.geostor.arkansas.gov>
Other citation details: Online linkage paths are input using the following sequence:METADATA SERVICE URL, DOWNLOAD SERVICE URL, APPLICATION URL

Description

Abstract: Data available online through GeoStor at <http://www.geostor.arkansas.gov>. This dataset contains points which represents the locations of all Hospital-Related Services in the State of Arkansas. The compilation of this data is a collaborative effort between the Arkansas Geographic Information Office and the Department of Health & Human Services (DHHS) to build a comprehensive geographic database of Hospital-Related

Internet



Arkansas GIS Data on the Web

http://www.geostor.arkansas.gov - FME Download - Microsoft Internet Explorer

GeoStor 5.0

Arkansas' Official GeoData Clearinghouse

Choose A Clip Boundary

Lower-Left Long. Lower-Left Lat. Use Full Extent

Upper-Right Long. Upper-Right Lat.

Format: **Coordinate System:**

Layers:

Save yourself time, become a registered user!
[Click Here](#) for details.

Email Notification Address:

Re-Enter Email Notification Address:

Internet



AHTD Data available on GeoStor

Aerial Photography (Imagery) (Historical)	Armories	Prisons, County or State	National Forest Boundaries
Factories or Plants	Average Daily Traffic Count, 1998	Observation or Lookout Towers	Railroads
Power Substations	Gas Tanks	Scenic Sites or Overlooks	County Roads: Paved
Town Halls or Courthouses	Grain Elevators	Dams with Locks	Farm Units or Dwellings
Boat Ramps	Oil Tanks	Fish Hatcheries	Latitude and Longitude Lines: 7.5'
Camps or Lodges	Pumping Stations, Oil or Gas	State Highways: Lightly Traveled Blacktop	Water Supply Tanks or Standpipes
Boat Docks or Piers	Gauging or Pumping Stations	Picnic Grounds	City Streets: Paved
Drainage Ditches	Prisons, County or State	Museums, General	Airports
Forest Ranger Stations	Observation or Lookout Towers	Highway Garages	Churches
State Highways: Heavily Traveled Blacktop	Scenic Sites or Overlooks	Weight and Permit Stations	Business Establishments
County Roads: Graded	Dams with Locks	Average Daily Traffic Count, 1986-2004	Post Offices
Power Plants	Fish Hatcheries	Nurseries	State Highway LRS
County Roads: Unimproved	State Highways: Lightly Traveled Blacktop	Drive-In Theaters	
Libraries	Picnic Grounds	State Highways: Proposed	
Historical Monuments	Museums, General	Tourist Information Centers	
Trailer Parks	Highway Garages	US Highways: Lightly Traveled Blacktop	
Quarries	Weight and Permit Stations	State Highways: Gravel	
Fairgrounds or Speedways	Nurseries	US Corps of Engineering Headquarters	
City Streets: Unpaved	Drive-In Theaters	Roads, All	
Levees or Dikes	State Highways: Proposed	City Limits	
Apartment Buildings or Motels	Tourist Information Centers	County Roads, All	
Sawmills	US Highways: Lightly Traveled Blacktop	City Streets, All	
US Highways: Heavily Traveled Blacktop	State Highways: Gravel	State Highways, All	
Gravel Pits	US Corps of Engineering Headquarters	Chicken Houses	
Roads, Miscellaneous	County Roads: Gravel	US Highways, All	
Radio or Television Stations	Police Stations	Interstate Highways	
		Fire Engine Houses	



QUESTIONS?