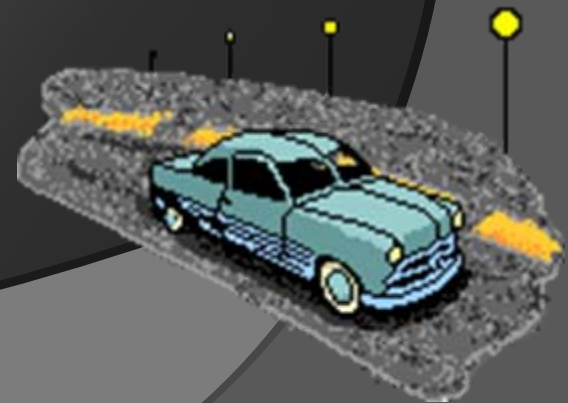




Georgia Department of Transportation

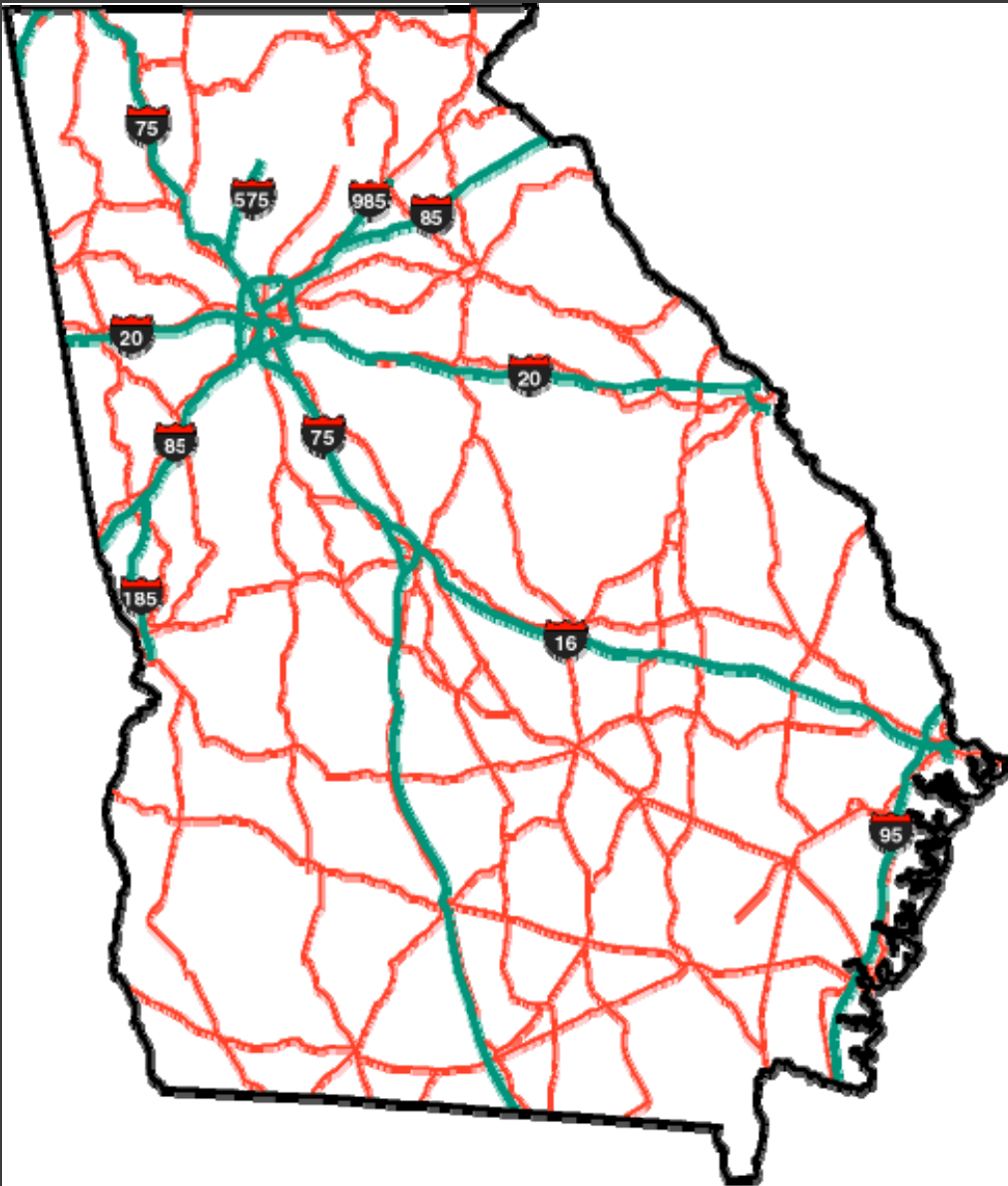
# PAVEMENT PRESERVATION

Eric C. Pitts, P.E.  
Assistant State Maintenance Engineer



# Outline

- ① I. Introduction
- ② II. Pavement Management System
- ③ III. Types of Pavement Preservation in Georgia
- ④ IV. Conclusion



# GEORGIA ROADS



# Current Roadways Maintained



- 18,100 centerline miles on the State Route System
- 45,942 Lane Miles
- 1,249 Centerline Miles on Interstate
- 5,995 Lane Miles on Interstate

# Bridges



- Total of 14,815 Structures in GA
- Currently we maintain 4441 bridges on the state route system.
- 4504 Locally owned bridges
- Inspect Structures every 2 years

## ⦿ Challenges for Maintenance:

- Cost
- Increased Traffic / More Accidents
- More Miles
- System Age



# Pavement Quality in Georgia

## ⦿ Pavement Preservation (Maintenance)

- Two categories: Preventive & Corrective
  - Preventive – applications prevent or reduce the rate of distress development in the pavement structure. Preventive applications are not intended to increase the structural capacity of pavement.
  - Corrective – applications are designed to restore distressed areas to acceptable level. Corrective maintenance applications increase the structural capacity of the pavement.

# Pavement Quality in Georgia

## ◎ GDOT Pavement Preservation Program

- Annual Pavement condition evaluation performed on all state highways both asphalt and concrete
- Goal of clipping half of all state highway shoulders annually
- Annual comprehensive inspections performed denoting deficiencies of the highway, inclusive of entire rights of way features (vegetation, signs, guardrail, pavement markings, etc.)





# Pavement Quality in Georgia

## ● GDOT Pavement Preservation Program cont.



hot mix asphalt less than 2 inches in thickness.

# Pavement Quality in Georgia

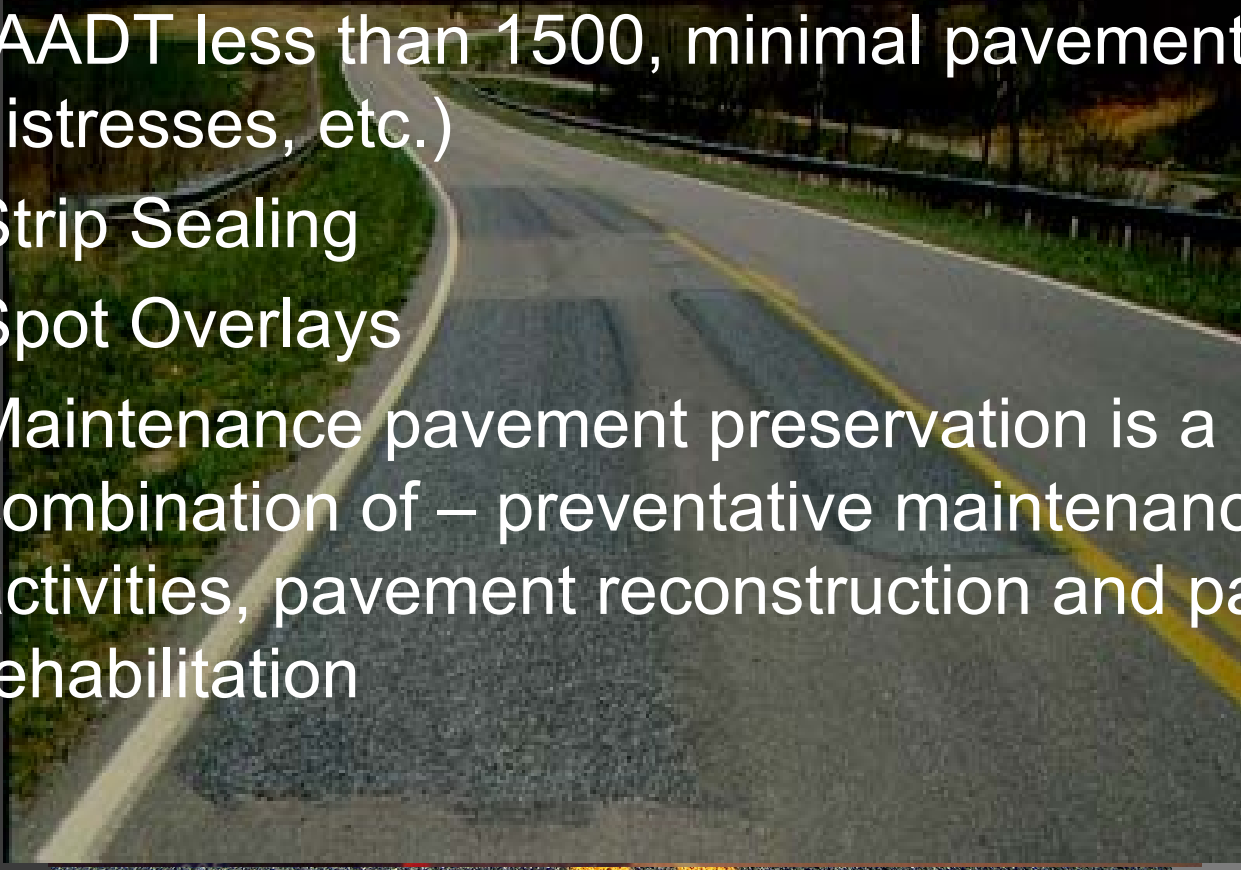
## ● GDOT Pavement Preservation Program cont.

- Chip Seal routes that meet Department criteria (AADT less than 1500, minimal pavement distresses, etc.)

- Strip Sealing

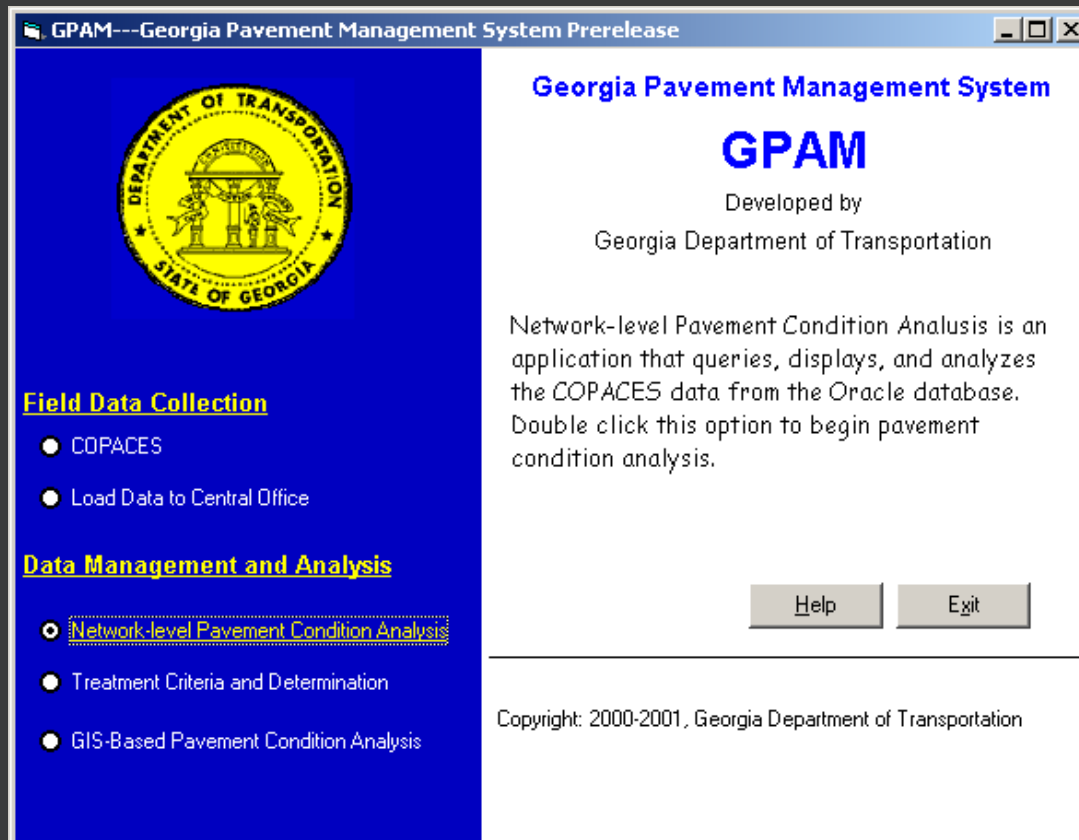
- Spot Overlays

- Maintenance pavement preservation is a combination of – preventative maintenance activities, pavement reconstruction and pavement rehabilitation



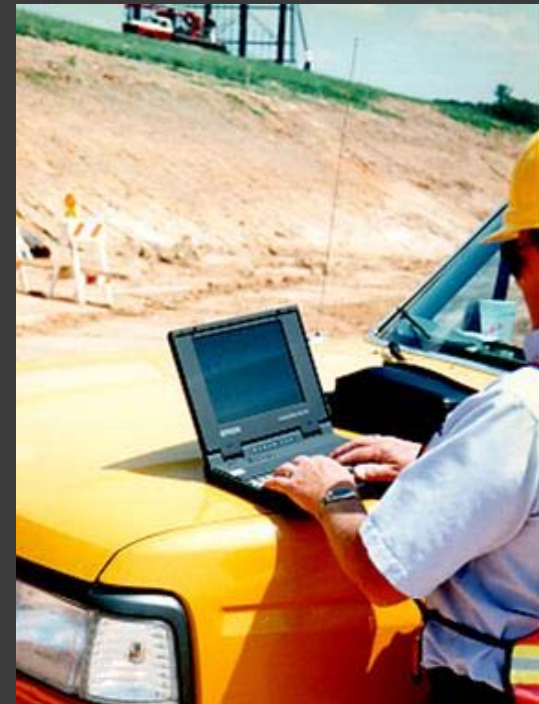
# Pavement Quality in Georgia

- Pavement Management (Maintenance)
  - GPAMS



# Pavement Quality in Georgia

- ◎ Pavement Management (Maintenance)
  - GPAMS
    - Field Data Acquisition



# Pavement Quality in Georgia

## ● Pavement Management (Maintenance)

### ● GPAMS

#### ○ Deficiencies Considered

- Load Cracking
- Block Cracking
- Rutting
- Raveling



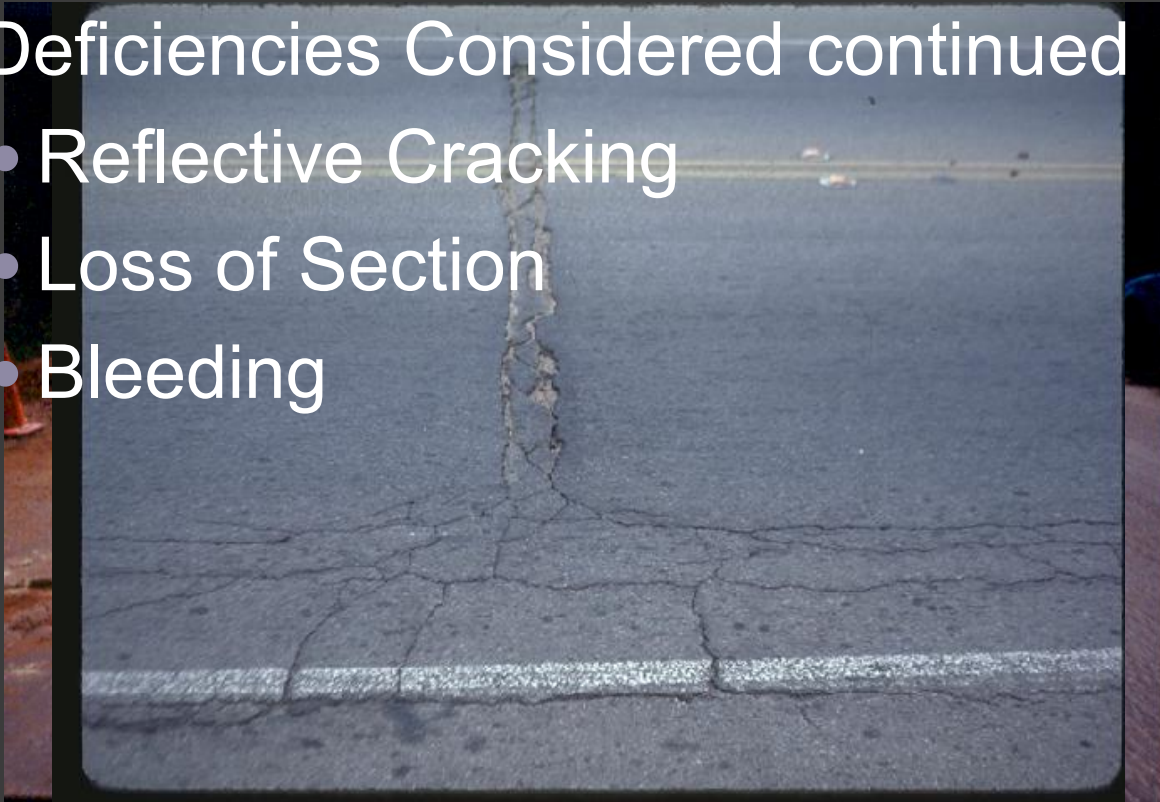
# Pavement Quality in Georgia

## ⦿ Pavement Management (Maintenance)

- GPAMS

- Deficiencies Considered continued

- Reflective Cracking
- Loss of Section
- Bleeding



# Pavement Quality in Georgia

## ◎ Pavement Management (Maintenance)

### ● GPAMS

#### ○ Deficiencies Considered continued

- Corrugation
- Edge Distress
- Patched Areas



# CONTRACT PAVEMENT PRESERVATION





I-75 Raveling Perry Georgia



# Micro Milled Surface







# Finished Product



# SAND SEAL

- Surface Treatment
- CRS-2H, #7, #89's and W-10's to lock the stone

# SR137 Marion County



**Before**



**After**



SR 233 Wilcox County



# Pavement Preservation by Maintenance Forces



**GDOT STRIP  
SEALING**



**CRS-2H EMULSION**



**TWO LIFTS #89 STONE**







**FINISHED PRODUCT**



IN THE LAST FIVE YEARS GDOT HAS  
APPLIED 504,872 GALLONS OF  
RUBBERIZED SEALANT STATEWIDE WITH  
MAINTENANCE FORCES

**TYPE M RUBBERIZED  
CRACK SEALANT**

**Sealing over 6000 Lane Miles**

A long, straight asphalt road stretching into the distance. The road surface is covered with numerous cracks, many of which have been filled with a dark, rubberized sealant. The sealant is applied in a way that follows the natural path of the cracks, creating a continuous line of protection. The road is flanked by grass and trees, with a white fence on the left and a trash can on the right. The sky is clear and blue.

**RUBBERIZED CRACK SEALANT**





I-185 Columbus shoulder joint sealant



**DEEP BASE REPAIR MILL AND INLAY**



DANGER

0730026

W 1900

W 1900

Wirtgen

Wirtgen  
STAT 2424  
1000 E.V.





**GDOT GREENVILLE PLANT**





WARNING  
STAY BACK  
100 FT.

40695938



**BLAW KNOX**





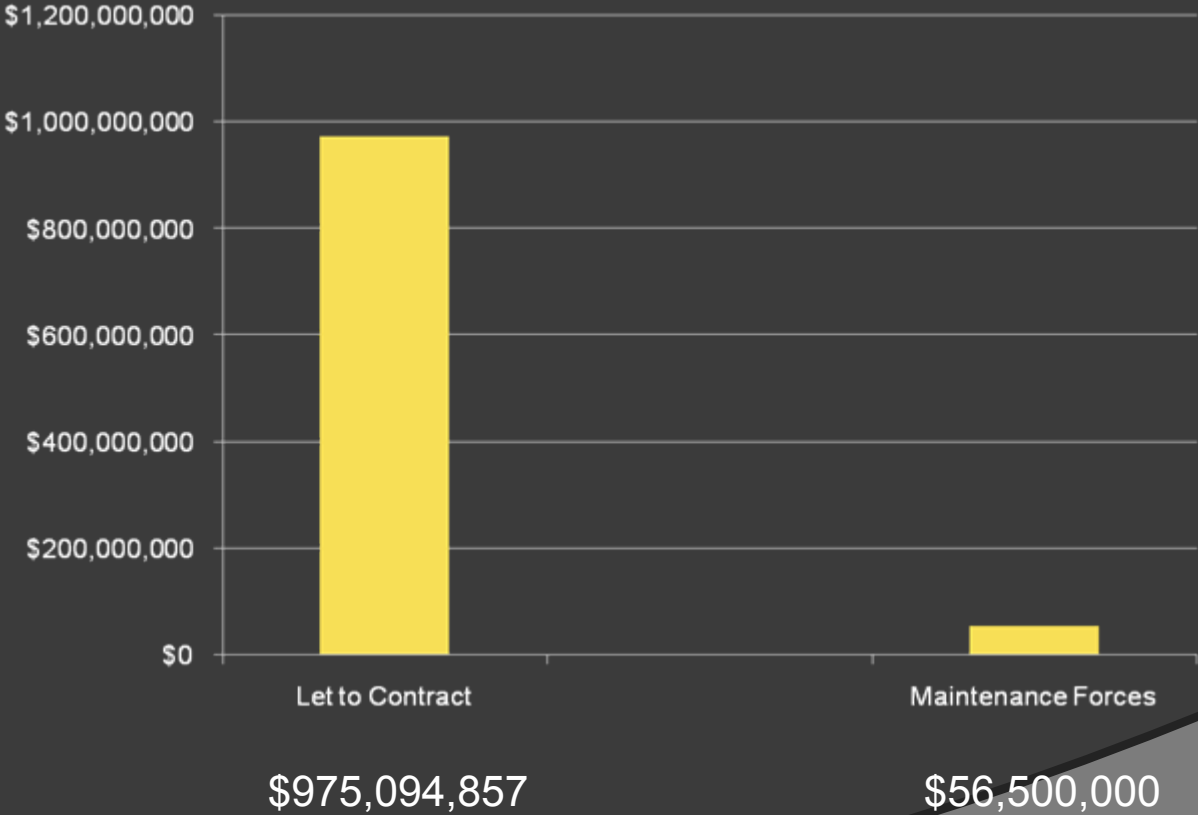


# FINISHED PRODUCT



# GDOT PAVEMENT PRESERVATION EXPENDITURES

## Money Spent Last Five Years



**QUESTIONS ?**

